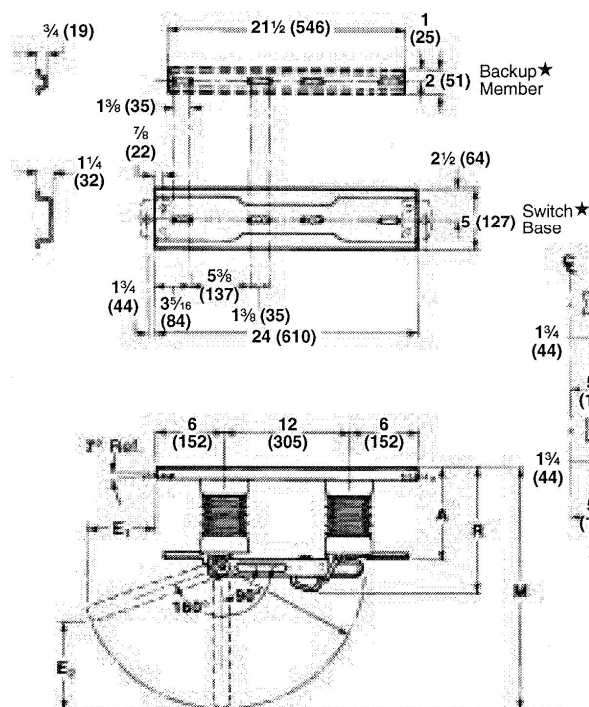


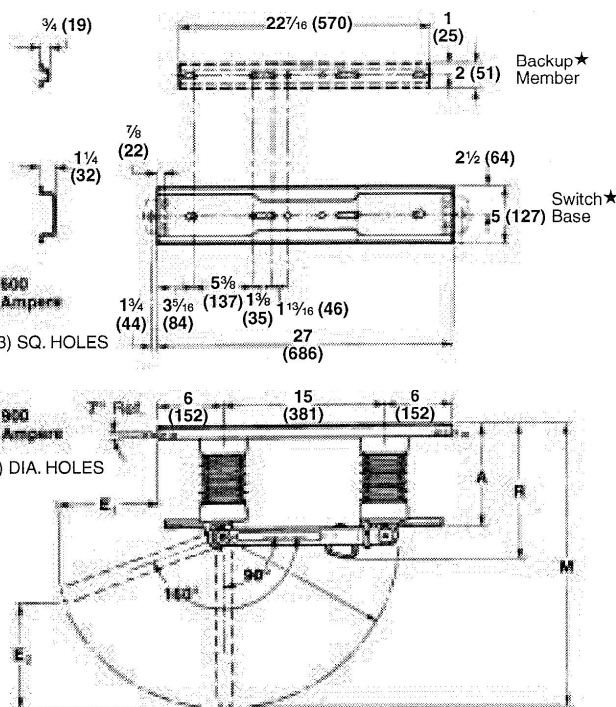


Branch Feeder Style (with bases having carriage-bolt slots)

Dimensions in inches (mm)



Catalog Numbers 4942R9, 4942R9-E, 4752R9, and 4752R9-E



Catalog Numbers 4922R9, 4922R9-E, 4943R9, 4943R9-E, 4733R9, and 4733R9-E

★ Slots are located symmetrically with respect to end of base.

Style	Mounting Position ^①	Rating					Catalog Number (less Connectors) ^④	Dimensions in Inches (mm)					Net Wt., Lbs. (kg.)
		kV			Amperes, RMS			A	E ₁	E ₂	M	R	
		Nom.	Max	BIL ^②	Cont.	Mom. ^③							
Branch Feeder (with bases having carriage-bolt slots)	Vertical or Inverted	14.4	15.5	110	600	40 000	4942R9	8½ (216)	5¼ (133)	7½ (194)	21½ (549)	11¼ (298)	29 (13.2)
							4942R9-E	8½ (216)	5¼ (133)	7½ (194)	21½ (549)	11¼ (298)	23 (10.4)
					900	40 000	4922R9	8½ (216)	8½ (206)	9¾ (248)	24½ (625)	11¼ (298)	32½ (14.7)
							4922R9-E	8½ (216)	8½ (206)	9¾ (248)	24½ (625)	11¼ (298)	26½ (12.0)
		25	27	125▲	600	40 000	4752R9	8½ (216)	6⅝ (162)	8 (203)	22½ (572)	11¼ (298)	34 (15.4)
							4752R9-E	8½ (216)	6⅝ (162)	8 (203)	22½ (572)	11¼ (298)	28 (12.7)
					900	40 000	4943R9	9¾ (248)	8⅞ (206)	9¾ (248)	25¾ (654)	13 (330)	33½ (15.2)
							4943R9-E	11¼ (298)	8⅞ (206)	9¾ (248)	27¾ (705)	15 (381)	30 (13.6)
						4733R9	9¾ (248)	9⅞ (232)	10 (254)	26¾ (679)	13 (330)	39½ (17.9)	
						4733R9-E	11¼ (298)	9⅞ (232)	10 (254)	28¾ (730)	15 (381)	35½ (16.1)	

① Blade opens 160°. A blade stop pin (furnished) can be positioned to limit blade travel to 90° but should only be used if the disconnect is installed in the vertical position.

② Verified by impulse tests with disconnect blade closed or open and base grounded, and with disconnect blade open and base ungrounded. Meets ANSI Standards C37.34-2.1.5-1971 and C37.34-2.4.2-1971.

③ For disconnects rated 900 amperes continuous, the 3-second rating is 25,000 amperes RMS symmetrical. For disconnects rated 600 amperes

continuous, the 1-second rating is 25,000 amperes RMS symmetrical and the 3-second rating is 16,000 amperes RMS symmetrical.

④ Catalog number suffix "-E" signifies model is furnished with S&C Cypoxy insulators. Catalog number *without* suffix "-E" signifies model is furnished with porcelain distribution-type insulators.

▲ These disconnects equipped with Cypoxy insulators meet requirements for 150-kV BIL rating.

SECTIONNEUR A LAME S&C / S&C DISCONNECT BLADE SWITCH