

Origin:

Customer:

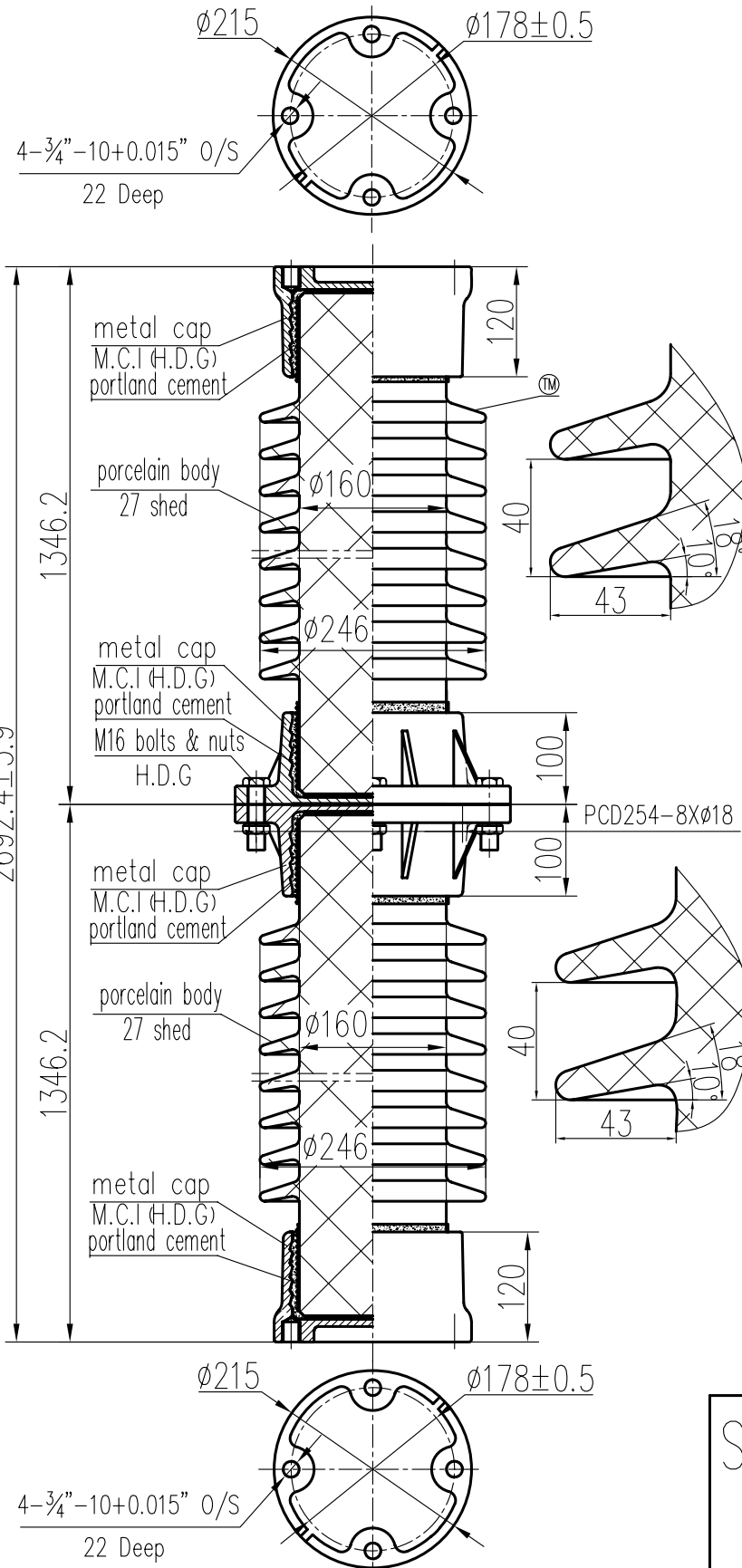


PTS
ÉLECTRIQUE Ltée

ISO 9001

20201 Clark Graham, Baie-D'Urfé, QC H9X 3T5
Tél: (514) 457-8886 / 1-800-363-8420 Fax: 514-457-6787
PTSELECTRIQUE.COM

A	Issue	Approve	Issue	Approve
	Issue	Design	Issue	Design
	Issue	Design	Issue	Design
	Issue	Design	Issue	Design
	Issue	Design	Issue	Design



ELECTRICAL PROPERTIES

Low Frequency Flashover Voltage
Wet: 660kV; Dry: 745kV
Critical Impulse Flashover Voltage
Pos.: 1410kV; Neg.: 1650kV
Low Frequency Withstand Voltage
Wet: 525kV; Dry: 610kV
Impulse Withstand Voltage: 1300kV
Radio Influence Voltage Data:
Test Voltage to Ground: 220kV;
Maximum RIV at 1000kHz: 1000µV

PHYSICAL PROPERTIES

Creepage Distance: 5868mm
Net weight: 236Kg

MECHANICAL PROPERTIES

Cantilever Strength Upright/Lever: 8.9kN
Torsion Strength: 13560N·m
Tension Strength: 178kN
Compression Strength: 444.8kN

According to Standard Specification:
ANSI C 29.9 except drawing

SUZHOU PORCELAIN
INSULATOR WORKS

Scale	1: 4
Design	W.C.M
Check	L.H.X
Approve	Z.Y.X
Date	2010.12.24

SOLID CORE STATION
POST INSULATOR

Designation	
Cat.No.	TR368
Drawing No.	36995G
Issue	1