

Origin:

Customer:

 20201 Clark Graham, Baie-D'Urfé, QC H9X 3T5  
 Tél: (514) 457-8886 / 1-800-363-8420 Fax: 514-457-6787  
 PTSELECTRIQUE.COM

	Approve
	Design
	Issue
	Approve
	Design
	Approve
	Design
	Issue
A	Issue

Approve

modify

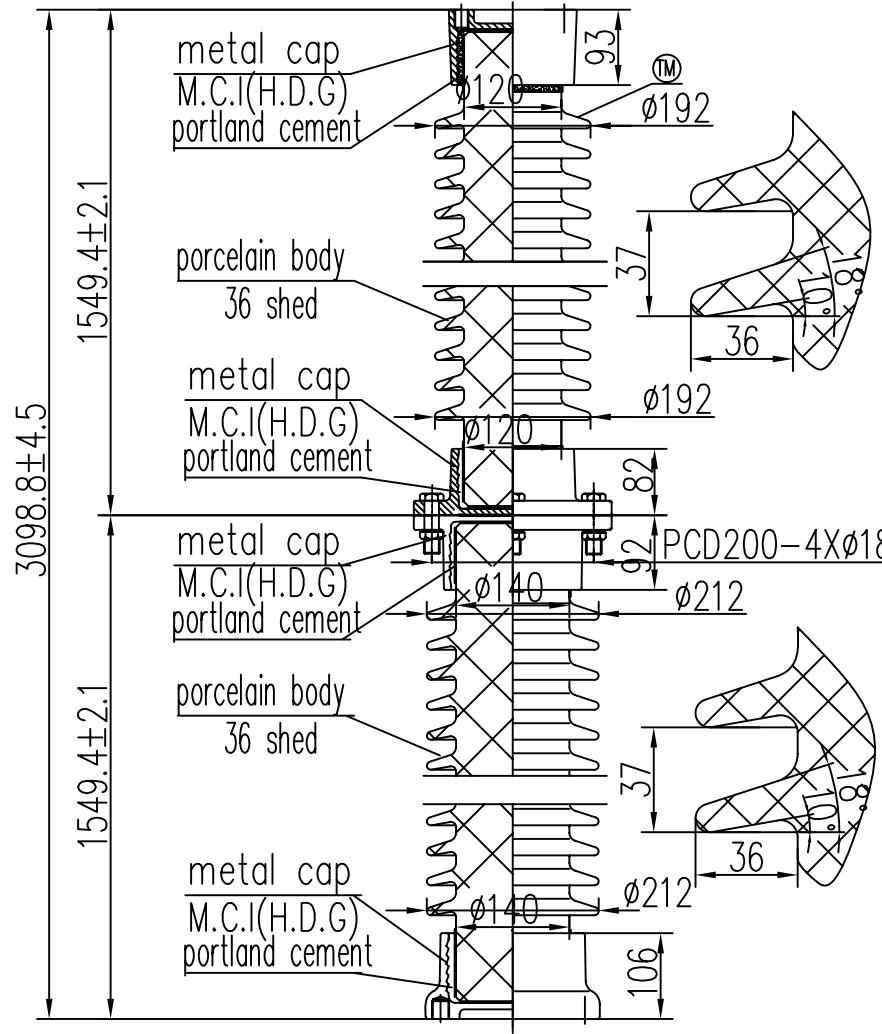
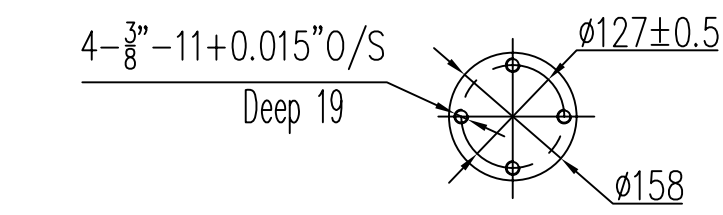
Issue

Approve

Design

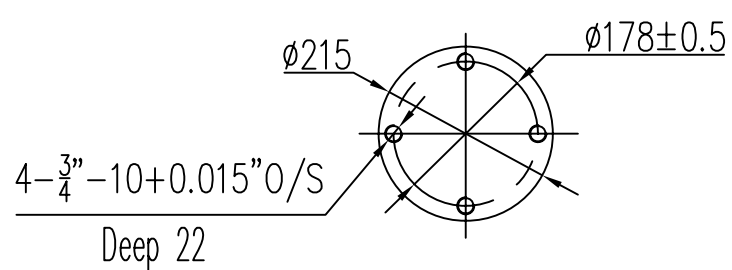
modify

Issue


**ELECTRICAL PROPERTIES**  
 Low Frequency Flashover Voltage  
 Wet: 740kV; Dry: 830kV  
 Critical Impulse Flashover Voltage  
 Pos.: 1610kV; Neg.: 1850kV  
 Low Frequency Withstand Voltage  
 Wet: 590kV; Dry: 680kV  
 Impulse Withstand Voltage: 1470kV  
 Radio Influence Voltage Data:  
 Test Voltage to Ground: 220kV;  
 Maximum RIV at 1000kHz: 1000 μV

**PHYSICAL PROPERTIES**  
 Creepage Distance: 6706mm  
 Net weight: 190Kg

**MECHANICAL PROPERTIES**  
 Cantilever Strength Upright/Lever: 5.3kN  
 Tension Strength: 89kN  
 Torsion Strength: 4.52kN·m  
 Compression Strength: 266.9kN

 According to Standard Specification:  
 ANSI C 29.9 except drawing


# SUZHOU PORCELAIN INSULATOR WORKS

Scale	1:5
Design	W.C.M
Check	L.H.X
Approve	Z.Y.X
Date	2011.03.31

## SOLID CORE STATION POST INSULATOR

Designation	
Cat.No.	TR371
Drawing No.	36997G
Issue	1