

Origin:

Customer:

Design Approve

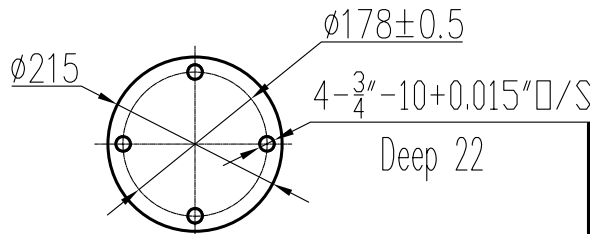
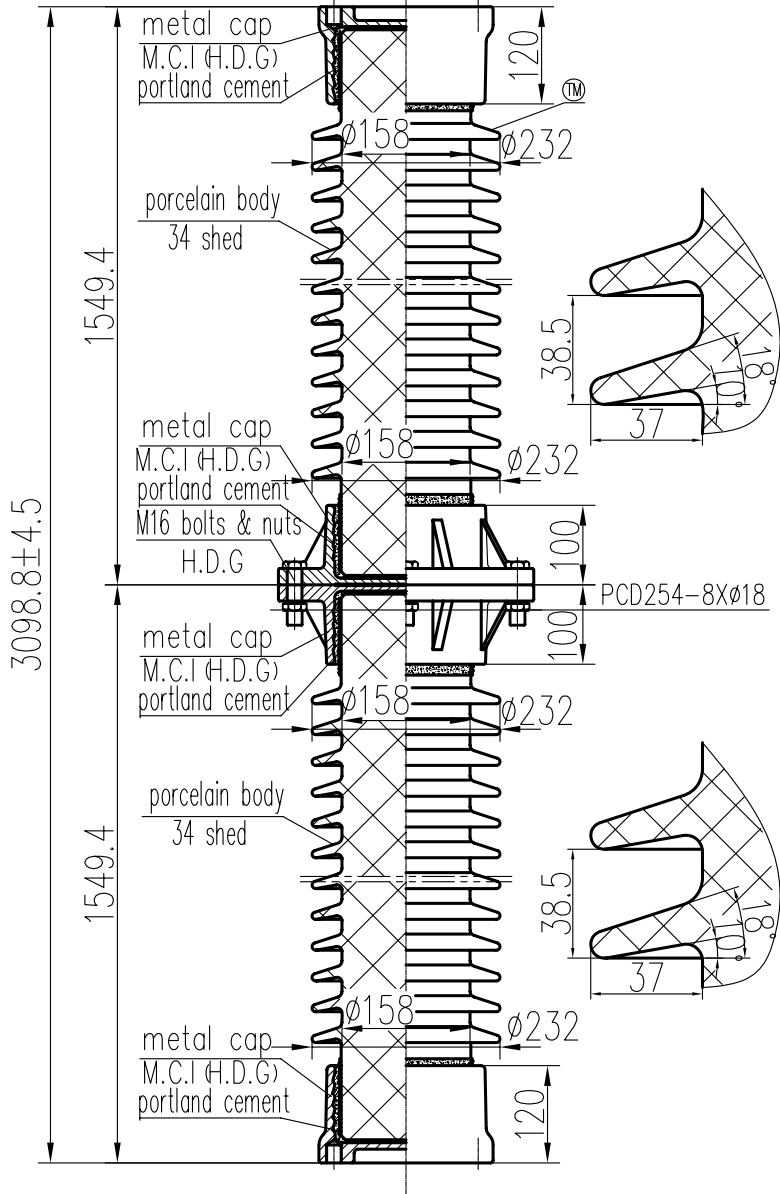
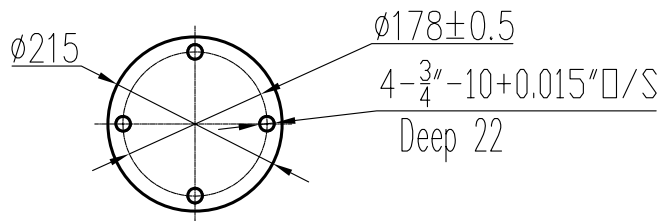
modify

Issue

Design Approve

modify

Issue



ELECTRICAL PROPERTIES

Low Frequency Flashover Voltage
Wet: 740kV; Dry: 830kV
Critical Impulse Flashover Voltage
Pos.: 1610kV; Neg.: 1850kV
Low Frequency Withstand Voltage
Wet: 590kV; Dry: 680kV
Impulse Withstand Voltage: 1470kV
Radio Influence Voltage Data:
Test Voltage to Ground: 220kV;
Maximum RIV at 1000kHz: 1000µV

PHYSICAL PROPERTIES

Creepage Distance: 6706mm
Net weight: 255Kg

MECHANICAL PROPERTIES

Cantilever Strength Upright/Lever: 7.8kN
Tension Strength: 178kN
Torsion Strength: 13.56kN·m
Compression Strength: 444.8kN

According to Standard Specification:
ANSI C 29.9 except drawing

SUZHOU PORCELAIN INSULATOR WORKS

Scale	1:5
Design	W.C.M
Check	L.H.X
Approve	Z.Y.X
Date	2011.03.31

SOLID CORE STATION POST INSULATOR

Designation	
Cat.No.	TR372
Drawing No.	36998G
Issue	1