

Origin:

Customer:

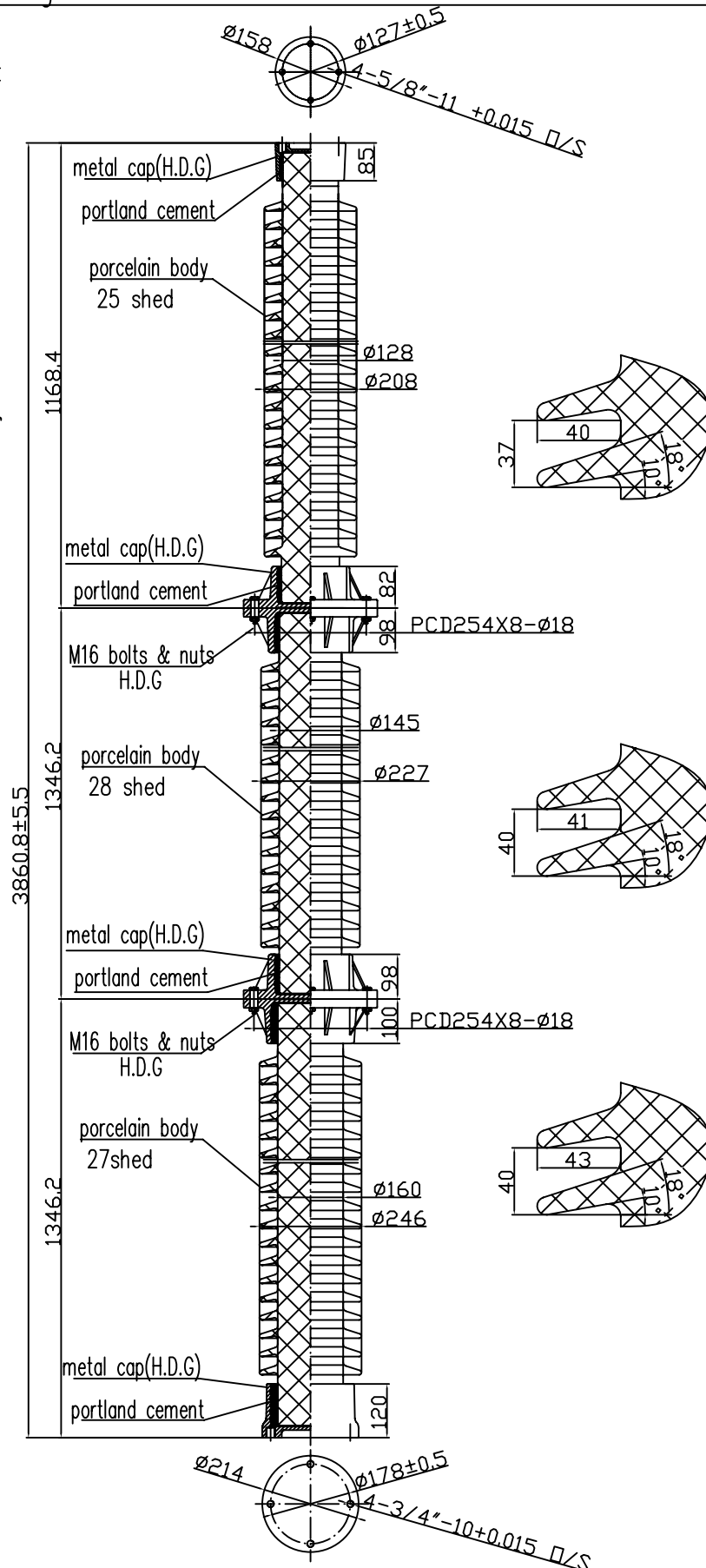


PTS
ÉLECTRIQUE Ltée

ISO 9001

20201 Clark Graham, Baie-D'Urfé, QC H9X 3T5
Tél: (514) 457-8886 / 1-800-363-8420 Fax: 514-457-6787
PTSELECTRIQUE.COM

Design	Approve	
		modify
	Issue	
	Approve	
		modify
Issue		



ELECTRICAL PROPERTIES

Low Frequency Flashover Voltage
Wet: 900kV; Dry: 990kV
Critical Impulse Flashover Voltage
Pos.: 2000kV; Neg.: 2240kV
Low Frequency Withstand Voltage
Wet: 710kV; Dry: 810kV
Impulse Withstand Voltage: 1800kV
Radio Influence Voltage Data:
Test Voltage to Ground: 318kV;
Maximum RIV at 1000kHz: 2000µV

PHYSICAL PROPERTIES

Creepage Distance: 8382mm
Net weight: 276Kg

MECHANICAL PROPERTIES

Cantilever Strength Upright/Lever: 6.3kN
Tension Strength: 89.0kN
Torsion Strength: 4.52kN·m
Compression Strength: 266.9kN

According to Standard Specification:
ANSI C 29.9 except drawing

SUZHOU PORCELAIN
INSULATOR WORKS

Scale	1: 3
Design	Design
Check	Check
Approve	Approve
Date	Date

ANTI-POLLUTION STATION
POST INSULATORS

Item	
Cat.No.	TR391
Drawing No.	38918
Issue	3