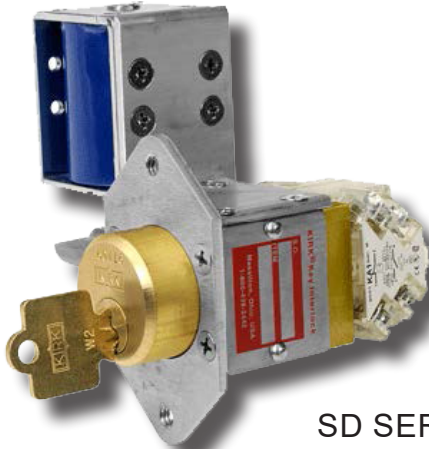




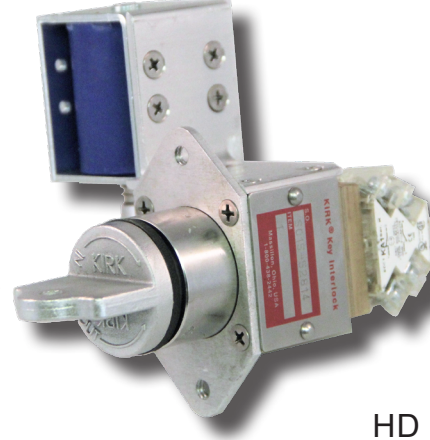
SPECIFICATION DATA SHEET

TYPE SKPM - SOLENOID KEY PANELMOUNTED

WWW.KIRKKEY.COM



SD SERIES



HD SERIES

The Type SKPM is a single cylinder interlock similar to the standard, unboxed SKRU in function but is more compact and is ideal where space is limited. The SKPM is designed to permit removal of the interlock key in response to an electric signal. However, instead of utilizing a terminal block, the SKPM is arranged so that the customer's leads are wired directly to the solenoid and to the auxiliary switches. The SKPM is designed so that the key is removable only when the solenoid is energized. All electrical components are UL recognized. Each SKPM is furnished with two tandem mounted Sq D Class 9001 KA1 contact blocks for a total of 2 N.O. and 2 N.C. auxiliary contacts. The switch rating is:

120VAC - 60A make / 6A break / 10A continuous
240VAC - 30A make / 3A break / 10A continuous
125VDC - 0.55A make & break / 2.5A continuous

Note: The 9001 KA1 contact blocks are not intended to be utilized in the solenoid circuit. If your design requires the aux contacts to break the signal to the solenoid, you must use the SKRU (Data Sheets 2.2A-2.2C). Reference the SKRU wiring diagram data sheet.

The SKPM is not offered with any type of housing. Data Sheet 2.2 (SKRU) if a housed solenoid key release is required.

OPTIONS

Solenoid Voltage – 120VAC, 24VDC, 48VDC, or 125VDC.

LED Signal Lamp – an LED signal lamp kit is available to be wired by the installer. Shipped loose.

Push Button – a push button kit is available to be wired by the installer. Shipped loose.

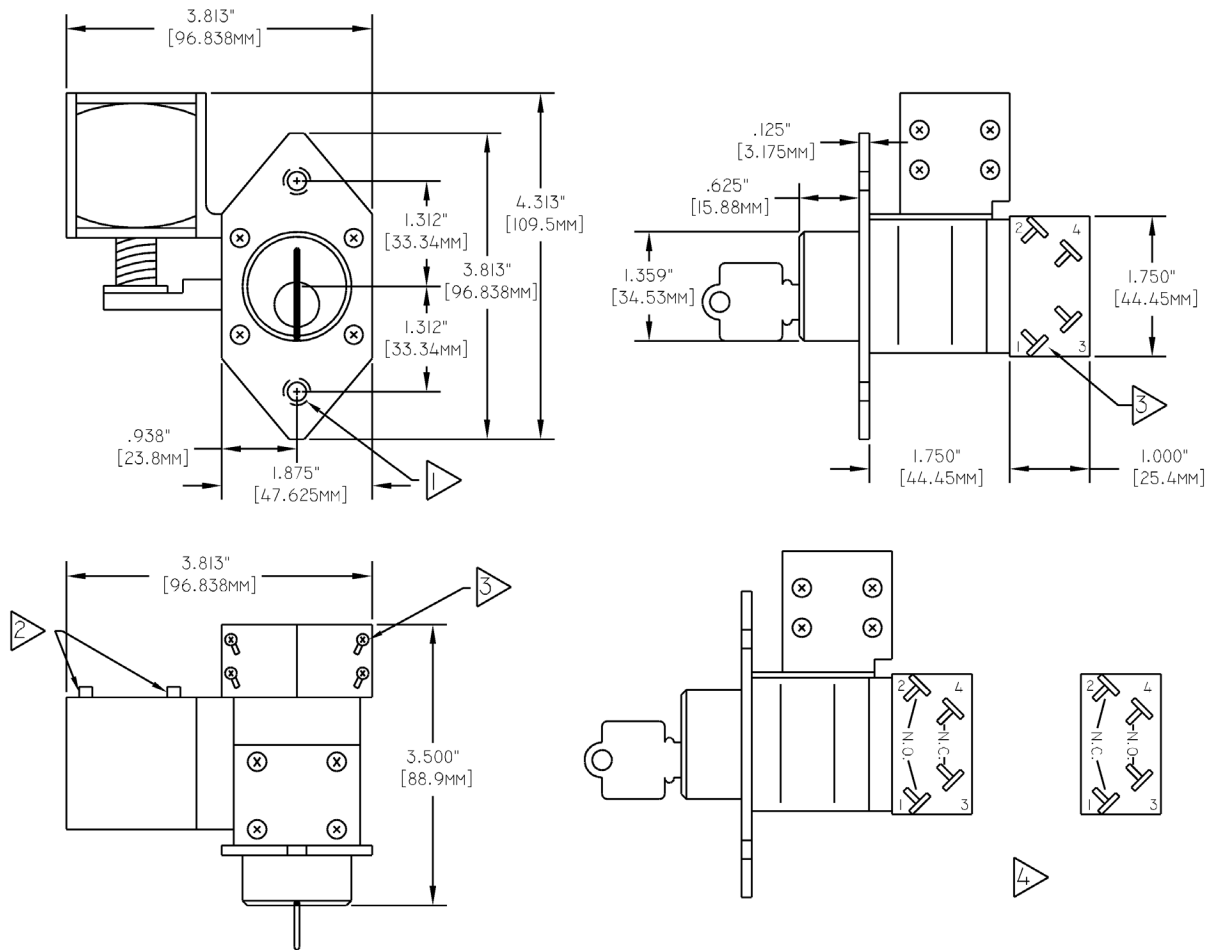
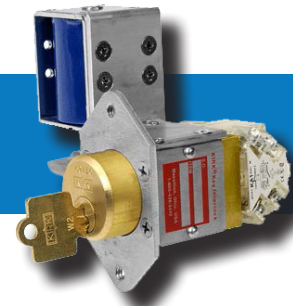
Stamp Key Interchange - specify an alphanumeric code to be stamped on the cylinder face and the key (e.g. A1, A2, B1, etc. - up to 5 characters). See Data Sheet (3.4) for Keys and Terminology (4.1) for details.

Protective Covers - see Data Sheet Protective Covers (3.1) for details.

Mounting Bolts – 1/4"-20 x 5/8" hex head made of stainless steel. Tamperproof mounting bolts are also available (1/4"-20 x 3/4").

Note: If both the LED signal lamp and push button are selected, a combination signal lamp and push button device will be furnished.

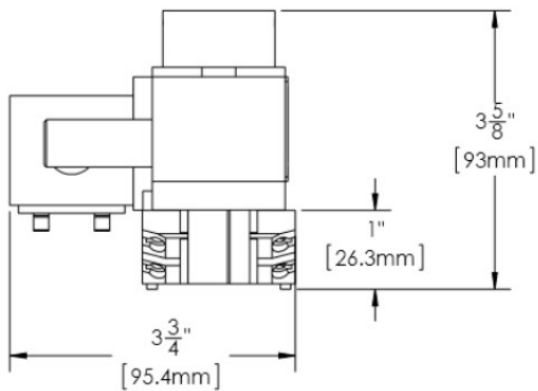
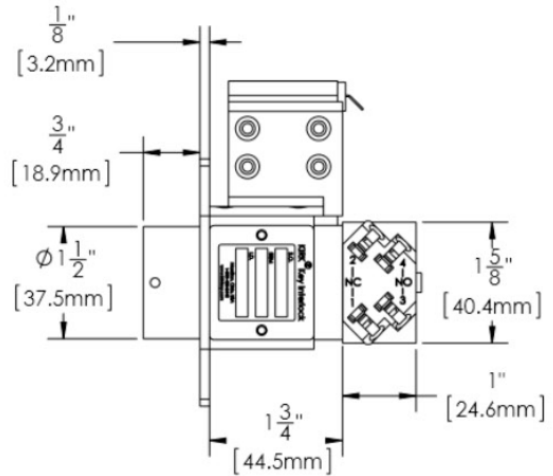
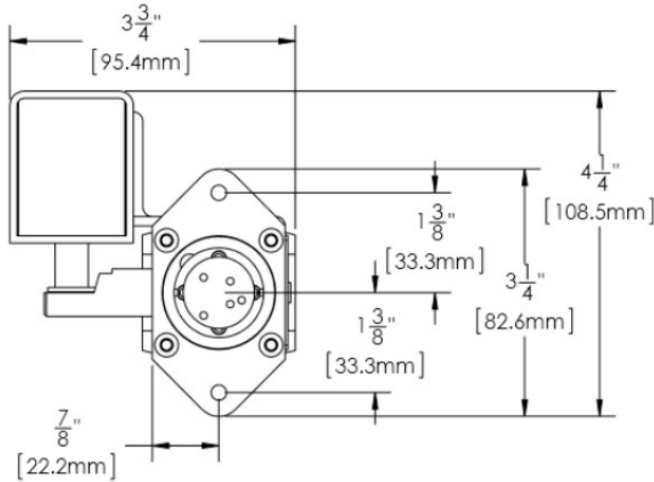
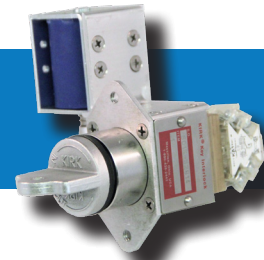
SD SERIES TYPE SKPM DRAWING



NOTES:

- 1) 1/4"-20 tapped mounting holes (2 holes).
- 2) .187 QC terminals.
- 3) Contact block terminal screws (8 screws).
- 4) Contact Arrangement: On the left is the contact position with the solenoid de-energized and key trapped - contacts 1 & 2 are open, 3 & 4 are closed. On the right is the contact position with the solenoid energized and the key released - contacts 1 & 2 are closed, 3 & 4 are open.

HD SERIES TYPE SKPM DRAWING



TYPE SKPM ORDERING GUIDE

Part Number

0	1	2	3	4	5	6	7	8	9	10
	S	K	P	M						

0	Series	K = SD Series S = HD Series
5	Solenoid Voltage	1 = 120 VAC 2 = 24VDC 3 = 125VDC 4 = 48VDC 5 = 250VDC 6 = 240VAC 7 = 24VAC
6	LED Signal Light	- = No 1 = Yes
7	Push Button	- = No 1 = Yes
8	Stamp Key Interchange	- = No S = Yes
9	Mounting Bolts	- = No M = Hex Bolts T = Tamperproof Bolts
10	Protective Covers	- = No C = Push On F = Flip Open (Push On cover only available for SD series)