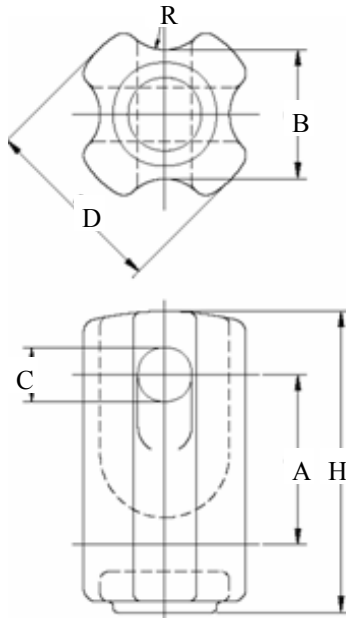
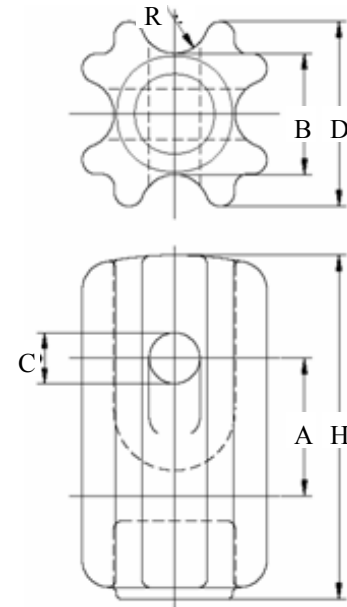




Isolateurs / Insulators



54-1 / 54-2 / 54-3



54-4

IDENTIFICATION	Numéro de catalogue / Catalog number.	54-1	54-2	54-3	54-4
	NBR 6249 Class	C4500-1		C9000-1	
	ANSI C29.3 Class	54-1	54-2	54-3	54-4
ELECTRICAL	Low-frequency wet withstand (kV)	12		16	
	Low-frequency dry withstand (kV)	25		31	
	Low-frequency dry flashover (kV)	26	30	35	35
	Low-frequency wet flashover (kV)	13	15	18	18
MECHANICAL	Minimum Cantilever Strength (daN)	4500	5300	9000	8900
DIMENSION	Leakage (creepage) distance (mm)	1-5/8" (42 mm)	1-7/8" (48 mm)	2-1/4" (57 mm)	3" (76 mm)
	Hauteur totale « H » / Total height « H »	3-1/2" (89 mm)	4-1/4" (108 mm)	5-1/2" (140 mm)	6-3/4" (171 mm)
	Outside diameter « D »	2-1/2" (64 mm)	2-7/8" (73 mm)	3-3/8" (86 mm)	3-1/2" (89 mm)
	Neck diameter « B »	1-3/4" (44 mm)	2-1/8" (54 mm)	2-3/8" (60 mm)	2-3/8" (60 mm)
	Hole diameter « C »	5/8" (16 mm)	7/8" (22 mm)	1" (25 mm)	1" (25.4 mm)
	Distance hole to hole « A »	1-3/4" (44 mm)	2-1/4" (57 mm)	3-1/8" (79 mm)	2-5/8" (67 mm)
	Groove radius « R »	11/16" (18 mm)	1" (25 mm)	7/8" (22 mm)	5/8" (16 mm)
PACKING	Poids (lbs/ch) / Weight (lbs/ea)	1	1.5	3	4
	Units per package (un.)	50	32	20	9

Matériel: Porcelaine grise

Material: Grey porcelain

ISOLATEUR D'ANCRAGE / GUY STRAIN INSULATOR