



# CHANCE® NEW ADDITIONS



# CHANCE® 2019 NEW ADDITIONS



Mobile App Display

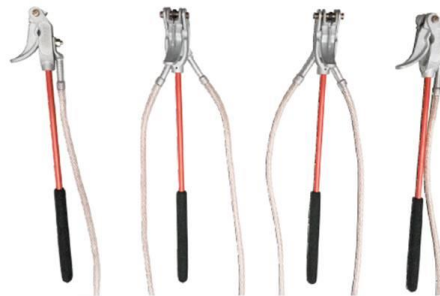


APPLE Watch®  
Display Available

Transmission Multi-Range Voltage Indicator  
w/ Bluetooth connectivity for mobile display  
Added June 2019



Rubber Glove Dust  
Added February 2019



IEC Grounding Sets for Bare  
Overhead Secondary Lines  
Added Jan 2019



IEC Short Circuit Sticks  
Added Jan 2019

## CHANCE® 2018 NEW ADDITIONS



7H Universal Grounding Clamp w/  
35mm Ball Stud  
Added Aug 2018



7H 2.5" Grounding C-Clamp w/  
350 MCM Cable and Ferrules  
Added May 2018



5H Three-Way Grounding Clamp  
Added May 2018



Class 6 Spiral Conductor Cover  
Added February 2018



5H Flat-face Grounding Clamps  
Added February 2018

## CHANCE® NEW ADDITIONS



Wireless Phasing Set  
Added October 2017



Multi-Range  
Voltage Indicator



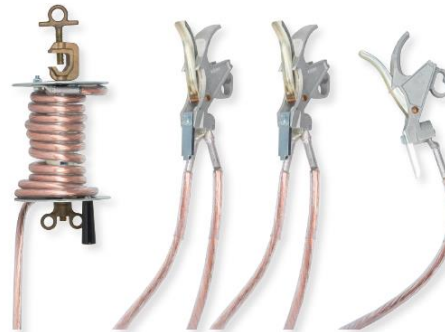
Proximity Voltage  
Indicator



ASTM 5H and 6H Rated  
Cluster Bars  
Added June 2017



Automatic Push-On Ground Sets  
IEC 8kA/1 sec  
Added December 2017



Automatic Snap-On Ground Sets  
IEC 8kA/1 sec  
Added December 2017



5H All-Angle  
Grounding Clamp  
Added June 2017



# CHANCE® NEW ADDITIONS



In-line Rubber  
Blanket Clamp  
Added June 2017



Hot End Ladder  
Support  
Added June 2017



Fall Restraint Bracket



Crossarm Link Stick  
1500lb & 3500lb



27kV Portable  
Load Break Tool



Impact Disconnect Stick



Crossarm Change-Out  
Assist Tool



DA Bolt Puller

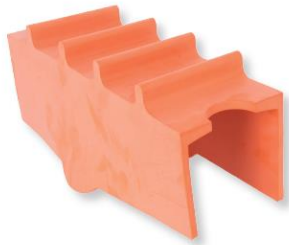


Adjustable Sheave  
Adapters



Universal Extension  
Arm

## CHANCE® NEW ADDITIONS



Rubber Insulating  
Crossarm Cover  
Added November 2017



Rubber Stinger Cover  
Added November 2017



Universal Hot Cover  
Added June 2017



ABS Pole Covers  
Added January 2017



22" x 22" Blankets



Lightweight Conductor  
Cover



Flexible Cutout Covers



Overhead Switch Barrier

# TRANSMISSION MULTI-RANGE VOLTAGE INDICATOR (TMRVI)

## WITH BLUETOOTH® CONNECTIVITY FOR DISPLAY ON MOBILE DEVICE

CHANCE® Lineman Grade Tools™ introduces the Transmission Multi-Range Voltage Indicator (TMRVI), used to determine if power lines are at rated voltage, have induced voltage or are de-energized. Must be used with properly selected universal hot stick, even with rubber gloves.

### FEATURES & BENEFITS

- Visible voltage indicator for use up to 765kV AC Phase to Phase\*
- Bluetooth connectivity to view TMRVI display live on a mobile device
- Large, easy-to-read dial face and brightly illuminated pointer indicate the voltage class.
- The class displayed is the approximate phase-to-phase and phase-to-ground voltage classes
- Can be used on overhead and underground lines with proper adapters
- Equipped with hold feature
- Battery Drawer for easy battery replacement with Lithium or Alkaline AA batteries
- Comes with storage bag designed to attach to line worker's belt
- Lightweight, 1.25 lbs versus the 2.5 lbs. of the MRVD, C4030979

\* For Distribution Voltages Including Capacitive Test Point - Use PSC4033710

### OPTIONAL FIELD TESTER

- The Transmission Multi-Range Voltage Indicator can be field tested with the Voltage Indicator Tester PSC4033582



### PART NUMBER

PSC4033955

### DESCRIPTION

Transmission Multi-Range Voltage Indicator

### WEIGHT

1-1/4 lbs.

The Bluetooth® word mark and logos are registered trademarks owned by Bluetooth SIG, Inc. and any use of such marks by Hubbell Power Systems, Inc. is under license. Other trademarks and trade names are those of their respective owners.



CHANCE Lineman Grade Tools | Hubbell Power Systems, Inc. | [hubbellpowersystems.com](http://hubbellpowersystems.com)

©Copyright 2019 Hubbell Incorporated. Because Hubbell has a policy of continuous product improvement, we reserve the right to change design and specifications without notice.

Printed in the U.S.A. | SF\_09\_174E



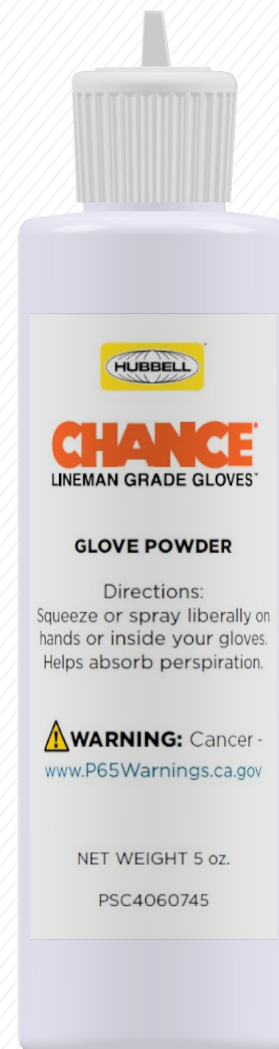
# CHANCE<sup>®</sup> RUBBER GLOVE POWDER

FOR USE WITH CHANCE<sup>®</sup>  
LINEMAN GRADE GLOVES<sup>™</sup>

Helps absorb perspiration during line work

## FEATURES AND BENEFITS

- 5 oz. bottle
- Case size 48 bottles
- Easy storage
- Facilitates glove donning and removal



**CATALOG NUMBER**  
PSC4060745

**DESCRIPTION**  
CHANCE Rubber Glove Powder

**WEIGHT**  
5.0oz (0.14Kg)



hubbelpowersystems.com

**Contact your Hubbell Power Systems  
representative for specification sheets.**

©2018 Hubbell Incorporated.  
Because Hubbell has a policy of continuous product improvement,  
we reserve the right to change design and specifications without notice.  
Printed in the U.S.A. | SF\_09\_166E



# SHORT CIRCUIT STICK

## NEW GROUNDING TOOL

CHANCE® Lineman Grade Tools™ introduces the Short Circuit Stick with spring loaded clamps for bare vertical secondary overhead systems.

### FEATURES

- Rated and tested per IEC 61230 at 3kA/1 Second
- Handle meets ASTM F711 and IEC 60855
- Clamps are connected by an aluminum channel mounted on a 27 mm diameter Epoxiglas® pole
- Clamps are spring loaded and allow connection of the phases to the neutral in one swift movement
- Available with 4 clamps, 5 clamps, or as a dual unit with 4 and 5 clamps, and clamp spacing options of 20 cm or 30 cm
- Conductor range: Min. 3.5 mm up to Max. 19.5 mm diameter



PART NUMBER	DESCRIPTION	CLAMP SPACING	WEIGHT
PST6003583	Short Circuit Stick w/ 4 clamps	20 cm	1.2 kg
PST6003584	Short Circuit Stick w/ 5 clamps	20 cm	1.5 kg
PST6003585	Short Circuit Stick w/ 4 and 5 clamps	20 cm and 20 cm	2.1 kg
PST6003615	Short Circuit Stick w/ 4 clamps	30 cm	1.3 kg
PST6003616	Short Circuit Stick w/ 4 and 5 clamps	30 cm and 20 cm	2.2 kg



CHANCE Lineman Grade Tools | Hubbell Power Systems, Inc. | [hubbellpowersystems.com](http://hubbellpowersystems.com)

©Copyright 2019 Hubbell Incorporated. Because Hubbell has a policy of continuous product improvement, we reserve the right to change design and specifications without notice.

Printed in the U.S.A. | SF\_09\_103E



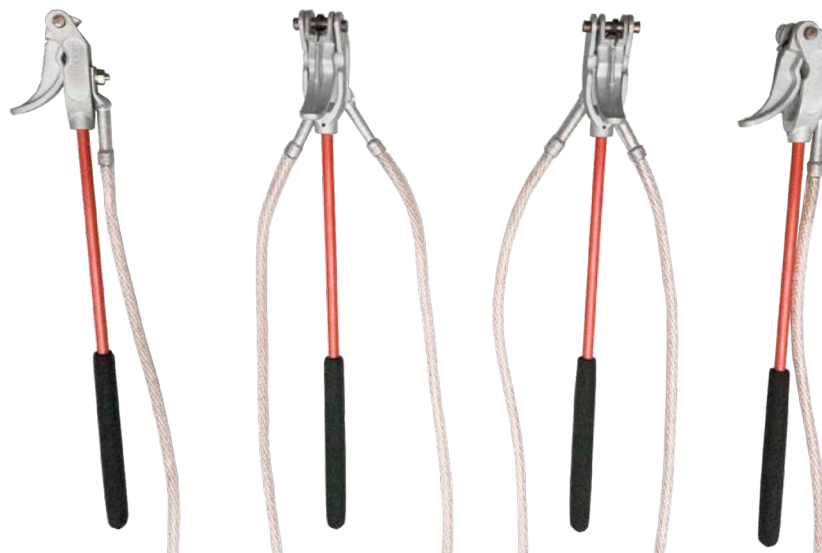
# GROUNDING SETS FOR SECONDARY OVERHEAD SYSTEMS

## NEW GROUNDING/EARTHING EQUIPMENT

CHANCE® Lineman Grade Tools™ introduces grounding sets with spring-loaded clamps for bare secondary overhead systems.

### FEATURES

- Rated and tested per IEC 61230 at 3kA/1 Second
- Handle tested at 100kV per 30 cm per ASTM F711 and IEC 60855
- Spring-loaded clamps for quick and easy installation and removal
- Lightweight
- Clamps are interconnected by 16 mm<sup>2</sup> grounding cable
- Conductor range:  
Min. 3 mm up to Max. 17 mm diameter
- Sets available in custom configurations



#### PART NUMBER

#### DESCRIPTION

#### WEIGHT

PSC6003694

GROUND SET - LV - 4 CLAMPS - 3 X 0.5M LEADS 16 mm<sup>2</sup>

1.4 kg

PSC6003695

GROUND SET - LV - 5 CLAMPS - 4 X 0.5M LEADS 16 mm<sup>2</sup>

1.7 kg



CHANCE Lineman Grade Tools | Hubbell Power Systems, Inc. | [hubbellpowersystems.com](http://hubbellpowersystems.com)

©Copyright 2019 Hubbell Incorporated. Because Hubbell has a policy of continuous product improvement, we reserve the right to change design and specifications without notice.

Printed in the U.S.A. | SF\_09\_167E

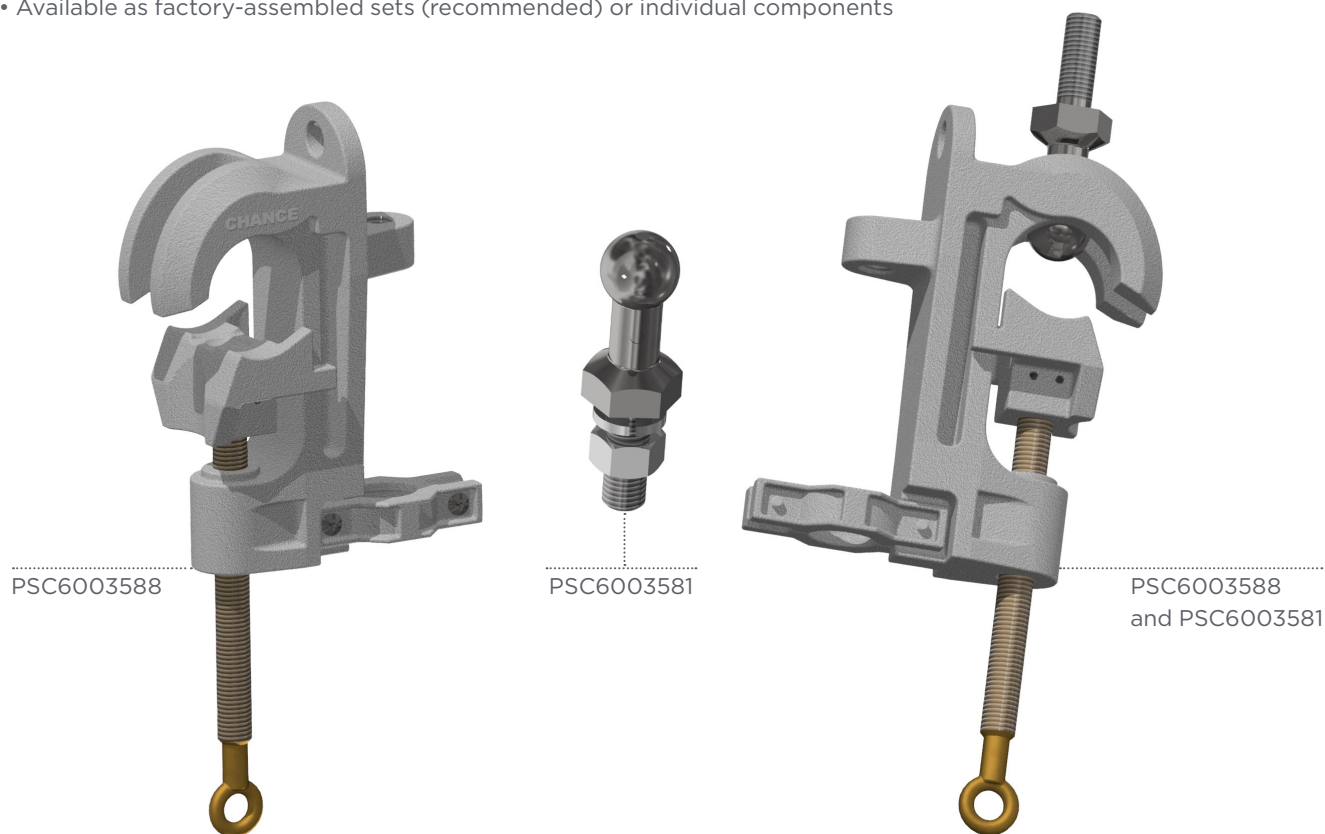


# 7H UNIVERSAL GROUND CLAMP

## CONNECT TO CONDUCTOR, BUS OR BALL STUD

### FEATURES AND BENEFITS

- Tested per ASTM F855-17 to Grade 7H (68kA; 183kA 1st cycle peak; X/R=30)
- Universal Clamp with aluminum body
- For up to 2" dia. conductor or bus, or 35mm Ball Stud
- Available as factory-assembled sets (recommended) or individual components



#### CATALOG NO.

#### DESCRIPTION

#### WEIGHT

PSC6003588	7H Universal Clamp	5.6 lb (2.6 kg)
PSC6003581	35mm Ball Stud 7H	1.8 lbs (0.8 kg)
PSC6003603	Grounding Ferrule 350 MCM Unshrouded Copper	1.1 lbs (0.5 kg)
PSC6003604	Grounding Ferrule 350 MCM Unshrouded Tin-Plated	1.1 lbs (0.5 kg)
PSS18067	350 MCM Yellow Grounding Cable	0.8 lbs/ft (1.2 kg/m)

Contact your local HPS representative for custom length grounding sets

*Hubbell has a policy of continuous product improvement. Please visit [hubbellpowersystems.com](http://hubbellpowersystems.com) to confirm current design specifications.*

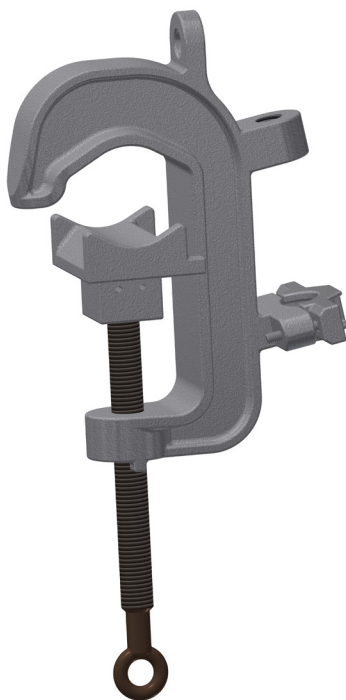


# 7H 2.5" GROUNDING C-CLAMP

## CLAMPS OR ASSEMBLED GROUND SETS WITH 7H CABLE AND FERRULES

### FEATURES AND BENEFITS

- C-Clamp with aluminum body and smooth jaws for 0.625" to 2.5" Conductor/Bus Bar
- 350 MCM cable with yellow thermoplastic elastomer (TPE) jacket
- Unshrouded Threaded Copper or Tin-Plated Ferrule – 3/4-10 UNC
- Bronze Eye Screw – 3/4-6 ACME
- Clamp equipped with Lift-Assist Ring
- Tested per ASTM F855-17 to Grade 7H (68kA; 183kA 1st cycle peak; X/R=30)
- Available as factory-assembled sets (recommended) or individual components



CATALOG NUMBER	DESCRIPTION	WEIGHT
PSC6003630	7H 2.5" Grounding C-Clamp	6.1 lbs (2.8 kg)
PSC6003603	Grounding Ferrule 350 MCM Unshrouded Copper	1.1 lbs (0.5 kg)
PSC6003604	Grounding Ferrule 350 MCM Unshrouded Tin-Plated	1.1 lbs (0.5 kg)
PSS18067	350 MCM Yellow Grounding Cable	0.79 lbs/ft (1.18 kg/m)

Contact your local HPS representative for custom length grounding sets



Hubbell Power Systems, Inc. | [hubbellpowersystems.com](http://hubbellpowersystems.com)

©Copyright 2018 Hubbell Incorporated. Because Hubbell has a policy of continuous product improvement, we reserve the right to change design and specifications without notice.

SF\_09\_149E



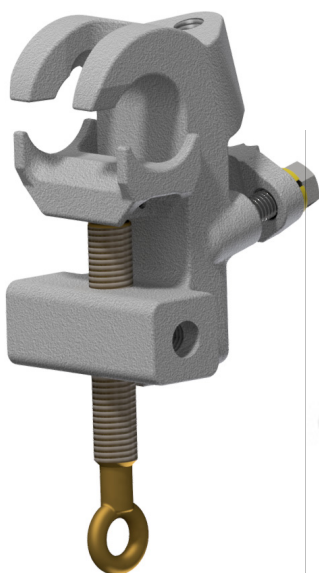


# 5H THREE-WAY UNIVERSAL GROUNDING CLAMP

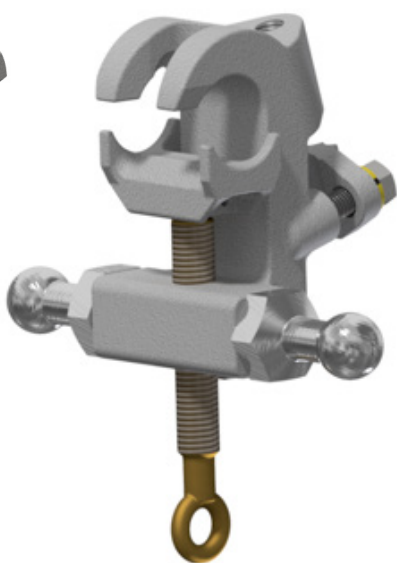
## VERSATILITY FOR DIFFERENT CONFIGURATIONS AND CONNECTION POINTS

### FEATURES AND APPLICATIONS

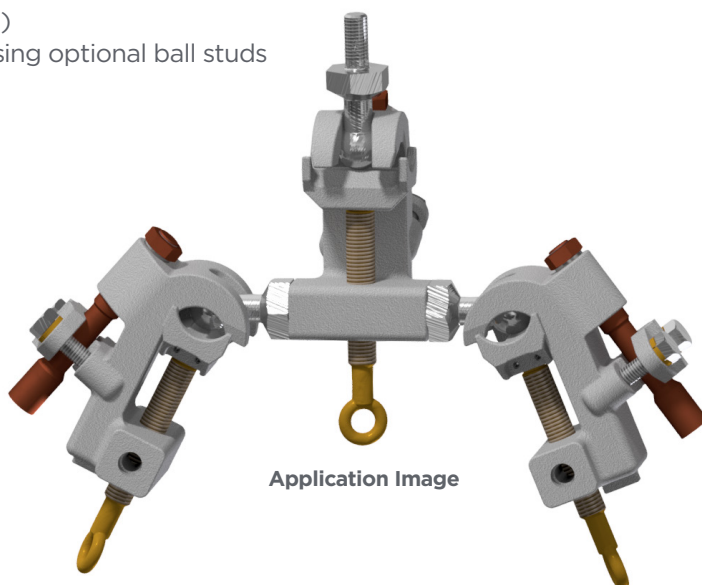
- Installs on ball stud (30mm) or conductor/bus (0.5" to 1.5")
- Provides single connection point for center phase when using optional ball studs
- Tapped for 5/8"-11 UNC threaded ferrule
- Tin-plated 30mm (1.18") Ball Stud (sold separately)



3-Way Clamp  
(PSC6003626)



3-Way Clamp (PSC6003626) w/ two  
Ball Studs (sold separately)



Application Image



30mm Ball Stud  
(PSP6003513P)

CATALOG NO.	DESCRIPTION	WEIGHT
PSC6003626	5H Three-Way Universal Grounding Clamp	3.88 lbs (1.76 kg)
PSP6003513P	5H 30mm Ball Stud	0.91 lbs (0.41 kg)

# SPIRAL CONDUCTOR COVER

## NEW CLASS 6 OPTION

### FEATURES & APPLICATIONS

- Provides protection for accidental brush contact during live line maintenance up to 72.5kV
- Tested per ASTM F712
- Made from tough, durable ABS Plastic
- Includes grip-all adapter for hotstick installation
- Overall length of approximately 53in. (1.3m)



CATALOG NUMBER	DESCRIPTION	WEIGHT
PSC4060737GA	Class 6 72.5 kV Spiral Conductor Cover	11 lbs (5 kg)



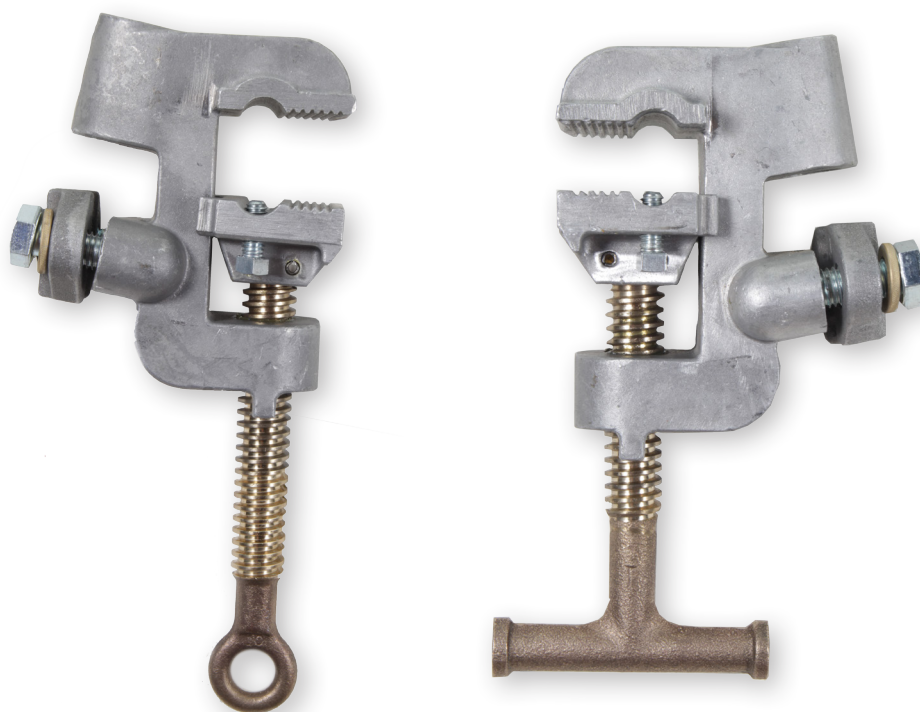
# 5H FLAT-FACE GROUNDING CLAMP

## NEW LIGHTER WEIGHT OPTION

### FEATURES

- Same 5H rating at around half the weight of bronze 5H flat-face clamps
- Designed for use on angle iron, tower steel, ground rod or 4/0 conductor
- Tested per ASTM F855\*
- Jaw opening range of 0.125" - 1.5"

*\*Must use set screws for 5H applications*



CATALOG NUMBER	DESCRIPTION	WEIGHT
PSC6003635	5H Flat-Face Grounding Clamp with T-Handle	2.6 lbs. (1.2 kg)
PSC6003636	5H Flat-Face Grounding Clamp with Eye Screw	2.6 lbs. (1.2 kg)

# WIRELESS PHASING SET (WPS)

## CAPACITIVE TEST POINT THROUGH 765KV AC

### FEATURES & BENEFITS

- Wireless Main and Probe Units communicate via linked digital radios - 300 ft. range
- Determine phase relationship between two conductors with same nominal voltage
- Displays “In-Phase” or “Out-of-Phase” in WPS mode
- For Overhead / Underground use on 50/60Hz systems
- Adjustable audible alarm
- Main has Full Range ARVI functionality like PSC4032915
- Field test with PSC4033582 tester
- Shock Tested per IEC 60068-2-27
- Vibration Tested per IEC 60068-2-6
- For use with hot sticks only



Orange Bag



Hard Case (sold separately)



### PART NUMBER

### DESCRIPTION

PSC4032916	Wireless Phasing Set with Orange Bag
PSC4033926	Wireless Phasing Set with Hard Case
PSC4033811	Hard Case Only



CHANCE Lineman Grade Tools | Hubbell Power Systems, Inc. | [hubbellpowersystems.com](http://hubbellpowersystems.com)

©Copyright 2017 Hubbell Incorporated. Because Hubbell has a policy of continuous product improvement, we reserve the right to change design and specifications without notice.

Printed in the U.S.A. | SF\_09\_118E





# MULTI-RANGE VOLTAGE INDICATOR (MRVI)

## WITH BLUETOOTH® CONNECTIVITY FOR DISPLAY ON MOBILE DEVICE

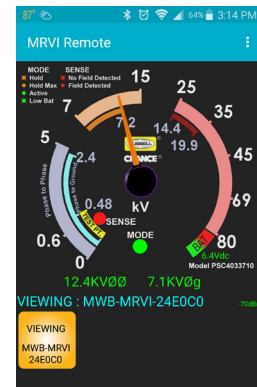
Chance® Lineman Grade Tools™ introduces the Multi-Range Voltage Indicator (MRVI), used to determine if power lines are at rated voltage, have induced voltage or are de-energized. Must be used with properly selected universal hot stick, even with rubber gloves.

### FEATURES & BENEFITS

- Visible voltage indicator with range from Capacitive Test Point up to 80kV Phase-to-Phase
- Bluetooth connectivity to view MRVI display live on a mobile device
- Large, easy-to-read dial face and brightly illuminated pointer indicate the voltage class.
- The class displayed is the approximate phase-to-phase and phase-to-ground voltage classes
- Can be used on overhead and underground lines with proper adapters
- Equipped with hold feature
- Battery Drawer for easy battery replacement with Lithium or Alkaline AA batteries
- Comes with storage bag designed to attach to line worker's belt
- Lightweight, 1.25 lbs versus the 2.5 lbs. of the MRVD, C4030979

### OPTIONAL FIELD TESTER

- The Multi-Range Voltage Indicator can be field tested with the Voltage Indicator Tester PSC4033582



Mobile App Display

### PART NUMBER

PSC4033710

### DESCRIPTION

Multi-Range Voltage Indicator

### WEIGHT

1-1/4 lbs.

The Bluetooth® word mark and logos are registered trademarks owned by Bluetooth SIG, Inc. and any use of such marks by Hubbell Power Systems, Inc. is under license. Other trademarks and trade names are those of their respective owners.



CHANCE Lineman Grade Tools | Hubbell Power Systems, Inc. | [hubbellpowersystems.com](http://hubbellpowersystems.com)

©Copyright 2016 Hubbell Incorporated. Because Hubbell has a policy of continuous product improvement, we reserve the right to change design and specifications without notice.

Printed in the U.S.A. | SF\_09\_109E



# PROXIMITY VOLTAGE INDICATOR (PVI)

## 600V TO 500KV - AUDIBLE & VISIBLE INDICATORS

### FEATURES & APPLICATIONS

- Bright display lights and audible alarm indicate voltage class without need to directly contact the conductor
- Used to determine if power lines are at rated voltage, have induced voltage or are de-energized
- Designed to be held 6 to 18 inches away from conductor being tested for presence of voltage
- As the voltage field intensity increases, the Proximity “SENSE” LED, Range LED and audible alarm will flash and beep faster
- Advanced feature allows user to temporarily disable range indications for voltages below the user selected range
- New battery drawer does not require removal of front panel for replacement of batteries
- Comes with storage bag designed to attach to line worker’s belt or use during storage
- Lightweight, 1.25lbs versus the 4.75lbs of the Super Tester

### OPTIONAL FIELD TESTER

- The proximity voltage indicator can be field tested with the Voltage Indicator Tester PSC4033582 seen below



### CATALOG NO.

### DESCRIPTION

### WEIGHT

PSC4033737

Proximity Voltage Indicator and Bag

1-1/4 lbs.

*Hubbell has a policy of continuous product improvement. Please visit [hubbellpowersystems.com](http://hubbellpowersystems.com) to confirm current design specifications*

SF\_09\_090\_E

# CHANCE<sup>®</sup> 5H AND 6H RATED CLUSTER BARS

## NOW TESTED PER ASTM F855-15 TO GRADES 5H AND 6H

CHANCE Cluster Bars have been used for nearly 50 years! In keeping up with industry needs, CHANCE Cluster Bars are now available with 5H and 6H ratings.



Cluster Bar with penetrating feature

CHANCE 5H and 6H Rated Cluster Bars are also available with an integral pole-penetrating option. See OSHA 1910.269 Appendix C for more information on protecting workers from hazardous differences in electrical potential and penetration of the pole.

CATALOG NUMBER	DESCRIPTION	ASTM F855-15 RATING	RATED CURRENT (15 CYCLES)	FIRST CYCLE TEST CURRENT PEAK	WEIGHT
PSC6003628	5H Rated Cluster Bar, 5/8" dia. x 11"	5H	47 kA	127 kA	10.7 lbs. (4.9 kg)
PSC6003628A	5H Rated Penetrating Cluster Bar, 5/8" dia.				10.8 lbs. (4.9 kg)
PST6003466	6H Rated Cluster Bar, 1" dia. x 11"	6H	55 kA	148 kA	12.0 lbs. (5.4 kg)
PST6003466A	6H Rated Penetrating Cluster Bar, 1" dia.				12.1 lbs. (5.5 kg)



CHANCE Lineman Grade Tools | Hubbell Power Systems, Inc. | [hubbellpowersystems.com](http://hubbellpowersystems.com)

©Copyright 2017 Hubbell Incorporated. Because Hubbell has a policy of continuous product improvement, we reserve the right to change design and specifications without notice.



SF\_09\_124E



# IEC GROUNDING SETS

## NEW GROUNDING EQUIPMENT

CHANCE® Lineman Grade Tools™ introduces IEC Grounding Sets with Automatic Push-On Clamps

### FEATURES & APPLICATIONS

- Spring-loaded clamps for quick and easy installation and removal
- Lightweight
- Rated 8kA/1 second per IEC 61230
- Conductor range: 3-20mm
- Sets available in various configurations



CATALOG NUMBER	DESCRIPTION	WEIGHT
PSC6003538	Push-On Ground Clamp-IEC-8KA 1S - 20 mm	0.36 kg
PSC6003518	Ground Clamp with Storage Reel for IEC Set	2.34 kg
PSC6003554	Installation tool for Push-On Ground Clamps	0.58 kg
PSCGSAC02ZC16P3	Bracket Grounding Set - 3 Push-On Clamps for Delta Systems	12.99 kg
PSCGSAC0204ZC16P4	Equipotential Grounding Set - 4 Push-On Clamps for Delta Systems	19.18 kg
PSCGSAC0204P4	Bracket Grounding Set - 4 Push-On Clamps for WYE Systems	6.96 kg
PSCGSAC0204P6	Equipotential Grounding Set - 6 Push-On Clamps for WYE Systems	13.51 kg



CHANCE® Lineman Grade Tools | Hubbell Power Systems, Inc. | [hubbellpowersystems.com](http://hubbellpowersystems.com)

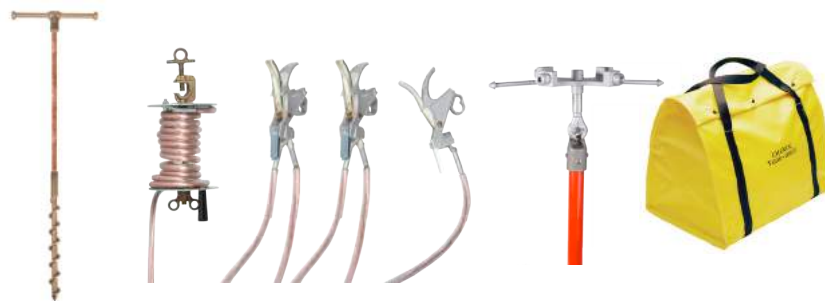
©Copyright 2017 Hubbell Incorporated. Because Hubbell has a policy of continuous product improvement, we reserve the right to change design and specifications without notice.





### PSCGSAC02ZC16P3 BRACKET GROUNDING SET - 3 PUSH-ON CLAMPS FOR DELTA SYSTEMS

- 3 push-on clamps interconnected with 2 meter leads of #2 clear cable
- 1 ground clamp with storage reel with one 16 meter ground lead of 16mm<sup>2</sup> clear cable
- Installation tool
- Storage bag
- Screw-in ground rod



### PSCGSAC0204ZC16P4 EQUIPOTENTIAL GROUNDING SET - 4 PUSH-ON CLAMPS FOR DELTA SYSTEMS

- 4 push-on clamps interconnected with two 2 meter leads and one 4 meter lead of #2 clear cable
- 1 ground clamp with storage reel with one 16 meter ground lead of 16mm<sup>2</sup> clear cable
- Cluster bar
- Installation tool
- Storage bag
- Screw-in ground rod



### PSCGSAC0204P4 BRACKET GROUNDING SET - 4 PUSH-ON CLAMPS FOR WYE SYSTEMS

- 4 push-on clamps interconnected with two 2 meter leads and one 4 meter lead of #2 clear cable
- Installation tool
- Storage bag



### PSCGSAC0204P6 EQUIPOTENTIAL GROUNDING SET - 6 PUSH-ON CLAMPS FOR WYE SYSTEMS

- 4 push-on clamps interconnected with two 2 meter leads and one 4 meter lead of #2 clear cable
- 2 push-on clamps connected with one 4 meter lead of # 2 clear cable
- Cluster bar
- Installation tool
- Storage bag



# IEC GROUNDING SETS

## NEW GROUNDING EQUIPMENT

CHANCE® Lineman Grade Tools™ introduces IEC Grounding Sets with Automatic Snap-On Clamps

### FEATURES & APPLICATIONS

- Spring-loaded clamps for quick and easy installation and removal
- Lightweight
- Rated 8kA/1 second per IEC 61230
- Conductor range: 5-30mm
- Sets available in various configurations



CATALOG NUMBER	DESCRIPTION	WEIGHT
PSC6003516	Snap-On Ground Clamp-IEC-8KA 1S - 30 mm	0.42 kg
PSC6003518	Ground Clamp with Storage Reel for IEC Set	2.34 kg
PSC6003517	Installation tool for Snap-On Ground Clamps	0.98 kg
PSCGSAC02ZC16S3	Bracket Grounding Set - 3 Snap-On Clamps for Delta Systems	13.57 kg
PSCGSAC0204ZC16S4	Equipotential Grounding Set - 4 Snap-On Clamps for Delta Systems	19.82 kg
PSCGSAC0204S4	Bracket Grounding Set - 4 Snap-On Clamps for WYE Systems	7.6 kg
PSCGSAC0204S6	Equipotential Grounding Set - 6 Snap-On Clamps for WYE Systems	14.27 kg



CHANCE® Lineman Grade Tools | Hubbell Power Systems, Inc. | [hubbellpowersystems.com](http://hubbellpowersystems.com)

©Copyright 2017 Hubbell Incorporated. Because Hubbell has a policy of continuous product improvement, we reserve the right to change design and specifications without notice.



### **PSCGSAC02ZC16S3    BRACKET GROUNDING SET - 3 SNAP-ON CLAMPS FOR DELTA SYSTEMS**

- 3 snap-on clamps interconnected with 2 meter leads of #2 clear cable
- 1 ground clamp with storage reel with one 16 meter ground lead of 16mm<sup>2</sup> clear cable
- Installation tool
- Storage bag
- Screw-in ground rod



### **PSCGSAC0204ZC16S4    EQUIPOTENTIAL GROUNDING SET - 4 SNAP-ON CLAMPS FOR DELTA SYSTEMS**

- 4 snap-on clamps interconnected with two 2 meter leads and one 4 meter lead of #2 clear cable
- 1 ground clamp with storage reel with one 16 meter ground lead of 16mm<sup>2</sup> clear cable
- Cluster bar
- Installation tool
- Storage bag
- Screw-in ground rod



### **PSCGSAC0204S4    BRACKET GROUNDING SET - 4 SNAP-ON CLAMPS FOR WYE SYSTEMS**

- 4 snap-on clamps interconnected with two 2 meter leads and one 4 meter lead of #2 clear cable
- Installation tool
- Storage bag



### **PSCGSAC0204S6    EQUIPOTENTIAL GROUNDING SET - 6 SNAP-ON CLAMPS FOR WYE SYSTEMS**

- 4 snap-on clamps interconnected with two 2 meter leads and one 4 meter lead of #2 clear cable
- 2 snap-on clamps connected with one 4 meter lead of # 2 clear cable
- Cluster bar
- Installation tool
- Storage bag

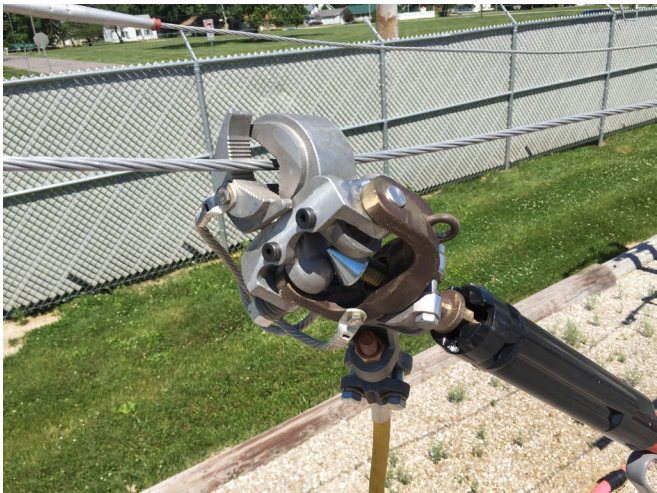
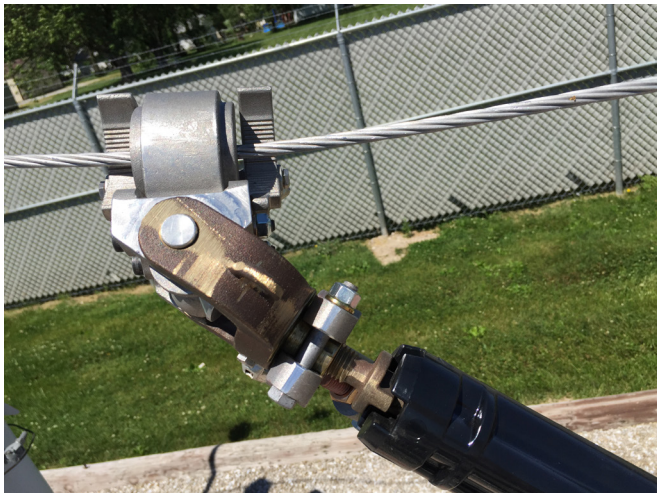
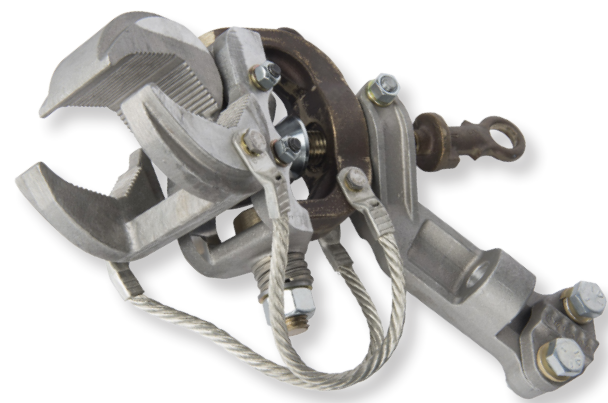




# CHANCE<sup>®</sup> 5H ALL-ANGLE GROUNDING CLAMP

## FEATURES & BENEFITS

- Easily installed from pole, structure, or ground - articulation allows for attachment to conductor or bus at nearly any angle
- 5H Rated - tested per ASTM F855-15 to Grade 5H
- Accommodates conductor/bus range from 0.258" to 2.88" diameter



CATALOG NUMBER	DESCRIPTION	ASTM F855-15 RATING	RATED CURRENT (15 CYCLES)	FIRST CYCLE TEST CURRENT PEAK	WEIGHT
PSC6003499	5H All-Angle Ground Clamp	5H	47kA	127kA	8.0 lbs. (3.6 kg)



CHANCE Lineman Grade Tools | Hubbell Power Systems, Inc. | [hubbellpowersystems.com](http://hubbellpowersystems.com)  
©Copyright 2017 Hubbell Incorporated. Because Hubbell has a policy of continuous product improvement, we reserve the right to change design and specifications without notice.

SF\_09\_125E



# CHANCE<sup>®</sup> BLANKET CLAMPS

## NEW IN-LINE GRIP-ALL BLANKET CLAMP

### FEATURES AND APPLICATIONS

- Blanket clamp for in-line use with a grip-all clamp stick
- Maximum opening of 2.0 inches (51mm)
- For use with rubber blankets and cover up

### CATALOG NUMBER

- PSC4060676



Hubbell Power Systems, Inc. | [hubbellpowersystems.com](http://hubbellpowersystems.com)

©Copyright 2016 Hubbell Incorporated. Because Hubbell has a policy of continuous product improvement, we reserve the right to change design and specifications without notice.

Printed in the U.S.A. | SF\_09\_121E





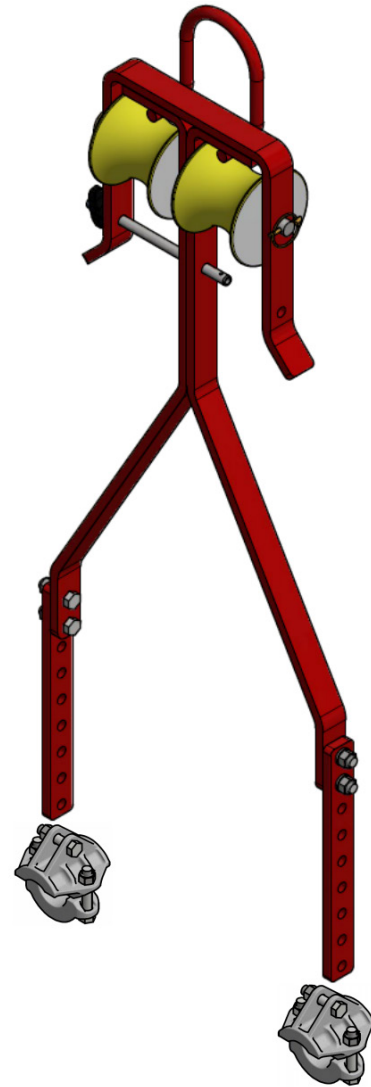
# HOT END LADDER SUPPORT

## NEW ACCESSORY FOR INSULATED LADDERS

Chance® Lineman Grade Tools™ introduces the Hot End Ladder Support for rigging insulated ladders on transmission lines

### FEATURES & BENEFITS

- Provides alternate method for rigging Epoxiglas® Ladders
- Ideal for moving ladders into working position with a helicopter
- For use with Chance 2-rail and 3-rail Epoxiglas® Ladders
- Adjustable height straps attach to ladder clamps\*
- Neoprene covered wheels minimize conductor damage
- Safety Locking Pin allows for easy installation and removal
- Rated Working Load: 800lbs



PART NUMBER	DESCRIPTION	WEIGHT
PSC4021513	Hot End Ladder Support	43 lb. / 19.5 kg.
E4020138P*	Ladder Clamp for 2.5in Rails	2.9 lb. / 1.31 kg.
PSE4021460P*	Ladder Clamp for 2in Rails	3 lb. / 1.36 kg

*\*Ladder Clamps must be ordered separately*



CHANCE Lineman Grade Tools | Hubbell Power Systems, Inc. | [hubbellpowersystems.com](http://hubbellpowersystems.com)

©Copyright 2017 Hubbell Incorporated. Because Hubbell has a policy of continuous product improvement, we reserve the right to change design and specifications without notice.

Printed in the U.S.A. | SF\_09\_123E



# FALL RESTRAINT BRACKET



Provides insulation/Isolation from differences in potential by means of the 6" Epoxiglas link  
Meets 5,000 lb. requirement as specified by OSHA 1910.66 App C personal fall arrest requirements



- Ratchet system with 48" nylon strap allows for quick and easy attachment to up to 18" dia. pole



- Swivel attachment head provides easy attachment to lanyard

## CATALOG NO.

PSC4021489

## DESCRIPTION

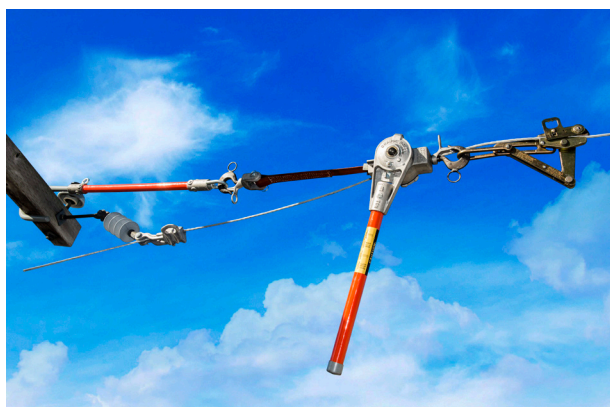
PERSONAL FALL RESTRAINT BRACKET

## WEIGHT

10 LBS. (4.5 KG)

# CROSSARM LINK STICK

**NOW AVAILABLE WITH 3500 LB-RATED WORKING LOAD**



*Pictured with Nylon-Strap Ratchet Hoist and Hot Line Wire Grips*

- Quick and easy set up, no sling necessary
- Plastisol-coated steel hook
- Fits standard 3-3/4" x 4-3/4" crossarms with 5" hook
- Galvanized steel swivel eye on conductor end for easy alignment
- Lifting eye on hook fitting for easy positioning by a hot line tool
- Also available with 1500 lb-rated working load
- Insulated Epoxiglas® length: 21.5"; total length: 41"
- Custom Epoxiglas lengths available

## CATALOG NO.

## DESCRIPTION

## WEIGHT

PSC4004132  
PSC4004372

Crossarm Link Stick - 1500 lb  
Crossarm Link Stick - 3500 lb

7.0 lbs.  
8.0 lbs.

*Hubbell has a policy of continuous product improvement. Please visit [hubbellpowersystems.com](http://hubbellpowersystems.com) to confirm current design specifications.*

SF09024E

# PORTABLE LOAD BREAK TOOL

The Chance® Portable Load Break Tool opens circuits under load when used with cutouts, disconnect switches, capacitor banks, fuse limiters, and power fuses.

## FEATURES

- Easy reset grip, will not pinch and is easy to use with gloves
- Lightweight design
- Packaged in a padded hard plastic carrying case
- Operation counter
- No exposed springs to damage Linemen's gloves
- Nominal Rating 14.4/25kV. Max. Design Rating 27kV



## CATALOG NO. DESCRIPTION

## kV NOMINAL

## kV MAX. DESIGN

## NOMINAL AMP INTERRUPTION

## MAX. AMP INTERRUPTION

## WEIGHT

PSCLBT27

Chance Load Break Tool 27kV 900 Amps

14.4 / 25 kV

27 kV

600 Amps

900 Amps

4.65 lbs

*Hubbell has a policy of continuous product improvement. Please visit [hubbellpowersystems.com](http://hubbellpowersystems.com) to confirm current design specifications*

SF\_09\_060\_E



# IMPACT DISCONNECT STICK

## FOR OPENING AND CLOSING DISCONNECT SWITCHES

### FEATURES

- Uses a slide-hammer mechanism to provide additional force for opening Disconnect Switches
- Poles are made of 1-1/4" diameter Epoxiglas® meeting ASTM F711 and IEC 60855 standards
- Heavy Duty Disconnect heads of bronze alloy
- Available in complete sticks, spliced sticks, and conversion kits
- Perfect for opening Switches in iced over conditions



### CATALOG NO.

### DESCRIPTION

PST4033750	Impact Disconnect Stick 6' Clear Glass 8'11" Overall Length
PST4033751	Impact Disconnect Stick 8' Clear Glass 10'11" Overall Length
PST4033752	Impact Disconnect Stick 10' Clear Glass 12'11" Overall Length
PST4033753	Impact Disconnect Stick 12' Clear Glass 14'11" Overall Length
PST4033709	Spliced Impact Disconnect Stick 9'8" Clear Glass 13'2" Overall Length
PSC4033741	Impact Disconnect Tool Retrofit Kit 27.5" Overall Length for 1-1/4" Diameter Poles
PSC4033747	Impact Disconnect Tool bottom with Female Splice 38" Overall Length

*Hubbell has a policy of continuous product improvement. Please visit [hubbellpowersystems.com](http://hubbellpowersystems.com) to confirm current design specifications*

SF\_09\_069\_E



# CROSSARM CHANGE-OUT ASSIST TOOL

- The Crossarm Change-out Assist Tool (CCAT) provides a temporary support for crossarms during change-out on H-frame structures.
- Facilitates removal and lowering of crossarm.
- For best results use two CCATs - one on each H-frame pole.
- Working load rating of 1,000 lbs.



Ratchet system with 48" nylon strap allows for quick and easy attachment on poles up to 18" dia.



After removing DA Bolt, CCAT supports crossarm and facilitates movement into position to be lowered or installed.

## CATALOG NO.

PSC4012901

## DESCRIPTION

Crossarm Change-out Assist Tool

## WEIGHT

11.7 lbs. (5.3 kg)



CHANCE Lineman Grade Tools | Hubbell Power Systems, Inc. | [hubbellpowersystems.com](http://hubbellpowersystems.com)

©Copyright 2016 Hubbell Incorporated. Because Hubbell has a policy of continuous product improvement, we reserve the right to change design and specifications without notice.

Printed in the U.S.A. | SF\_09\_111E

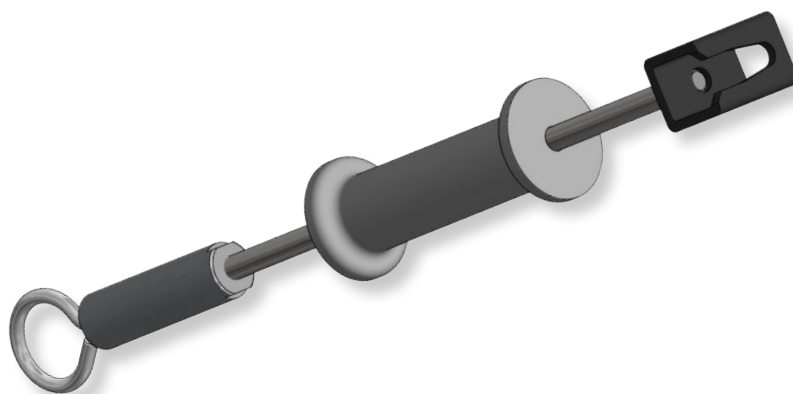


# DA BOLT PULLER

## EASILY REMOVE DA AND OTHER BOLTS

### FEATURES AND BENEFITS

- Uses 5 lb. impact hammer for easy removal of bolt sizes 5/8" - 7/8"
- Great for extracting bent, tight, and stuck bolts
- Safer and easier than driving bolt with a hammer and drift pin
- Eye screw for easy handline attachment



After capturing exposed DA Bolt end, pull back firmly on hammer to provide the impact force necessary to remove lodged bolt.

### CATALOG NO.

### DESCRIPTION

### WEIGHT

PSC4012783

DA Bolt Puller with Impact Hammer 24" for 5/8" - 7/8" bolts

10.0 lbs (3.7 kg)

*Hubbell has a policy of continuous product improvement. Please visit [hubbellpowersystems.com](http://hubbellpowersystems.com) to confirm current design specifications*

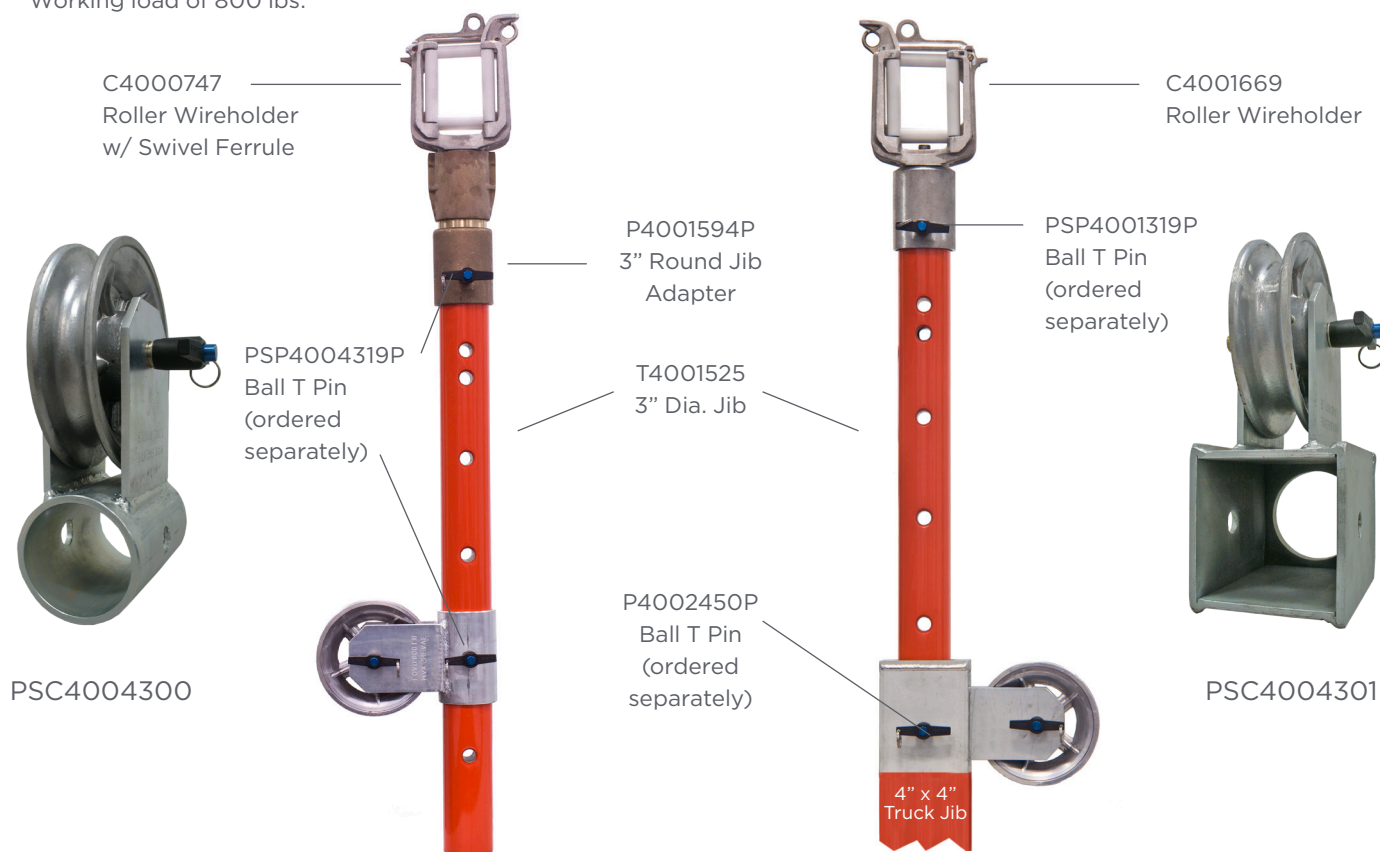
SF\_09\_096\_E

# ADJUSTABLE SHEAVE ADAPTERS

## FOR EASY ADJUSTMENT OF INSULATED DISTANCE BETWEEN WIRE HOLDER AND SHEAVE

### FEATURES

- Optimize distance between wireholder and sheave while maintaining proper insulated distance
- Adjustable Sheave Adapter easily moves between holes in 3" Jib (T4001525)
- Allows for use of wireholder and sheave at the same time
- Accommodates existing accessories shown and more
- Working load of 800 lbs.



### CATALOG NO.

### DESCRIPTION

### WEIGHT

PSC4004300

Adjustable Sheave Adapter to fit 3" Dia. Round Jib

9.5 lbs (3.6 kg)

PSC4004301

Adjustable Sheave Adapter to fit 4" x 4" Square Jib

15.6 lbs (5.8 kg)

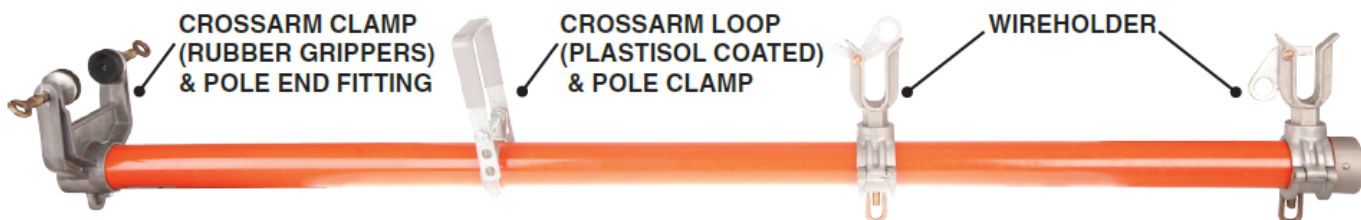
*Hubbell has a policy of continuous product improvement. Please visit [hubbellpowersystems.com](http://hubbellpowersystems.com) to confirm current design specifications*

SF\_09\_086\_E



# Universal Extension Arms

- Fit composite or wood crossarms up to 3 $\frac{3}{4}$ " x 4 $\frac{3}{4}$ "
- Cushioned clamp and hanger loop to protect composite arms
- Grippers on clamp can be removed for wood crossarms
- Design allows removal of components for reconditioning pole
- Designed for use with rubber gloves or hot sticks



**6-ft. Universal Extension Arm PSC4004101**

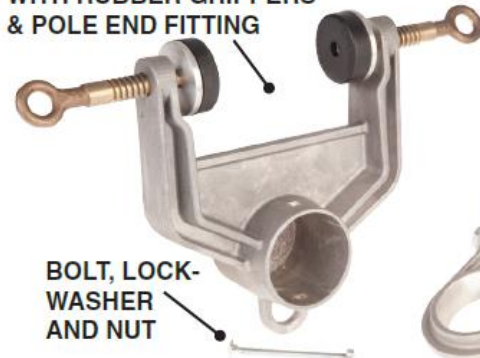


Catalog No.	Epoxiglas® Arm Dia & Length	Number of Wireholders	Fits Maximum Crossarm Size	Max. Vertical Loading per Wireholder
PSC4004101	2 $\frac{1}{2}$ " x 6'	2	3 $\frac{3}{4}$ " x 4 $\frac{3}{4}$ "	150 lb.
PSC4004102	2 $\frac{1}{2}$ " x 5'	1	3 $\frac{3}{4}$ " x 4 $\frac{3}{4}$ "	150 lb.

# Universal Extension Arm Retrofit Kit

- Allows conversion of wood-only Extension Arms to Universal Extension Arms

CROSSARM CLAMP WITH RUBBER GRIPPERS & POLE END FITTING



CROSSARM LOOP WITH PLASTISOL COATING & POLE CLAMP



Kit instructions show how to cut off the old end fitting and drill for the attachment of the new bolt-on end fitting.

Conversion permits easy removal of the Crossarm Clamp for periodic reconditioning of the pole.

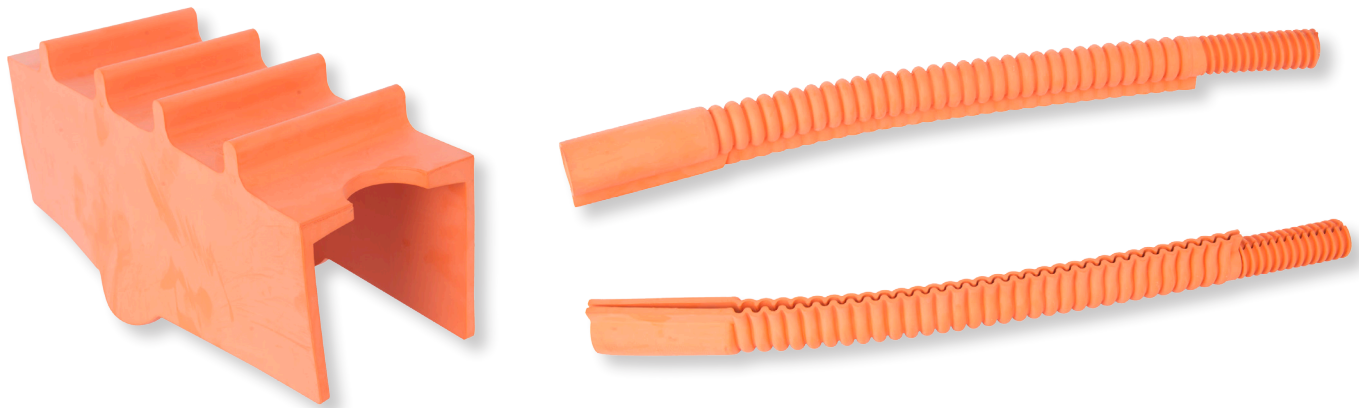
## Universal Extension Arm Retrofit Kit PSC4004103

# FLEXIBLE COVERS

## NEW RUBBER COVER UP SELECTIONS

### FEATURES & APPLICATIONS

- Rubber Stinger Cover provides the flexibility needed to use on stingers in addition to overhead lines
- Rubber Insulating Crossarm Cover provides insulation to support conductors in line hose during energized maintenance
- Ozone/corona-resistant elastomer provides protection from accidental brush contact
- Meet or exceed ASTM D1049 & D1050
- Class 2 Type II (ozone-resistant) – max. use 17kV phase-to-phase
- Rubber Stinger Cover – max. conductor size of 1.1" ( 28mm)
- Rubber Insulating Crossarm Cover – max. crossarm size of 4" (102mm) x 4.5" (114mm)



CATALOG NUMBER	DESCRIPTION	WEIGHT
PSC4060672	Class 2 Type II Rubber Insulating Crossarm Cover	3.1 lb (1.4 kg)
PSC4060674	Class 2 Type II Rubber Stinger Cover 35.0" (888 mm)	3.0 lb (1.4 kg)
PSC4060675	Class 2 Type II Rubber Stinger Cover 15.8" (400 mm)	1.2 lb (0.5 kg)



# CLASS 4 UNIVERSAL HOT COVER

## NEW STACKABLE DESIGN

### FEATURES & BENEFITS

- Uses less storage space
- Made from Polyethylene
- Rated per ASTM F712 to Class 4 - 36.6 kV covered phase-to-covered phase
- Use with Rubber Gloves or Hotsticks
- Secure with included bungee cord
- Used to cover up post insulators, cable terminations, arresters and potheads



### CATALOG NUMBER

PSC4060692

### DESCRIPTION

Class 4 Universal Hot Cover



CHANCE Lineman Grade Tools | Hubbell Power Systems, Inc. | [hubbellpowersystems.com](http://hubbellpowersystems.com)

©Copyright 2017 Hubbell Incorporated. Because Hubbell has a policy of continuous product improvement, we reserve the right to change design and specifications without notice.

Printed in the U.S.A. | SF\_09\_119E



# ABS POLE COVERS

## NEW CLASS 4 ABS SELECTION

### FEATURES AND APPLICATIONS

- Meets or exceeds ASTM F712
- Class 4 (36.6kV Covered Phase-to-Covered Phase)
- Protection from accidental brush contact with energized components during pole removal/installation and other line maintenance
- Made of ABS plastic
- Covers can be joined by overlapping impressions



CATALOG NO.	DIAMETER	LENGTH
PSC4060699	9 in. (22.9 cm)	72 in. (182.9 cm)
PSC4060700	9 in. (22.9 cm)	48 in. (121.9 cm)
PSC4060701	9 in. (22.9 cm)	36 in. (91.4 cm)
PSC4060702	9 in. (22.9 cm)	24 in. (61.0 cm)
PSC4060703	9 in. (22.9 cm)	12 in. (30.5 cm)
PSC4060704	12 in. (30.5 cm)	72 in. (182.9 cm)
PSC4060705	12 in. (30.5 cm)	48 in. (121.9 cm)
PSC4060706	12 in. (30.5 cm)	24 in. (61.0 cm)
PSC4060707	12 in. (30.5 cm)	12 in. (30.5 cm)



CHANCE® Lineman Grade Tools™ | Hubbell Power Systems, Inc. | [hubbellpowersystems.com](http://hubbellpowersystems.com)

©Copyright 2016 Hubbell Incorporated. Because Hubbell has a policy of continuous product improvement, we reserve the right to change design and specifications without notice.

Printed in the U.S.A. | SF\_09\_112 E



22" X 22"

## SLOTTED BLANKETS

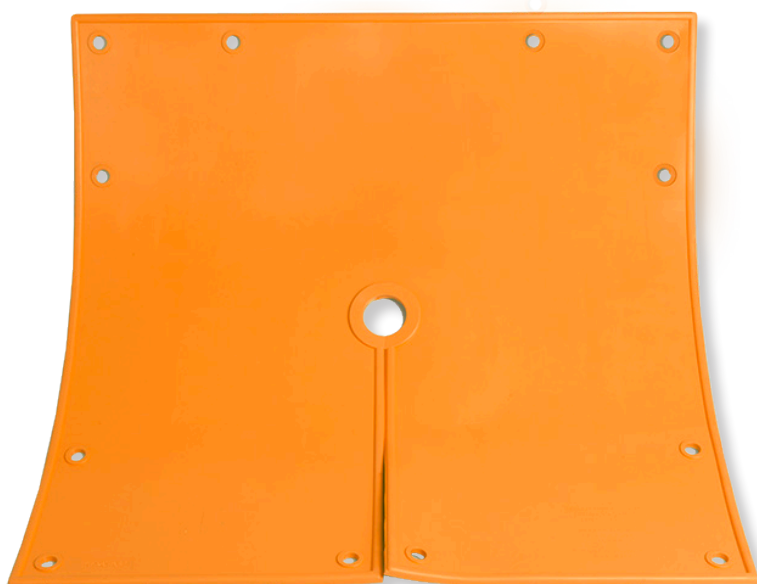
**NEW RUBBER BLANKET SELECTION****CLASS 2 TYPE II****FEATURES AND APPLICATIONS:**

- Meets or exceeds ASTM Standard Specification D1048
- Class 2 Type II (ozone-resistant)
- Protection from accidental brush contact with energized components during line maintenance
- Made of ozone/corona-resistant elastomer
- Special formulation exhibits superior resistance to long-term aging/checking
- Standard package quantity is 12
- 1.5 inch (38 mm) diameter center hole
- 12 eyelets

**CATALOG NUMBER**

- PSC4060708

*Hubbell has a policy of continuous product improvement. Please visit [hubbellpowersystems.com](http://hubbellpowersystems.com) to confirm current design specifications*



SF\_09\_101\_E

# 22" X 22" BLANKETS

## NEW RUBBER BLANKET SELECTION

### CLASS 4 TYPE II

#### FEATURES AND APPLICATIONS:

- Meets ASTM Standard Specification D1048
- For Class 4 Type II (ozone-resistant)
- Protection from accidental brush contact with energized components during line maintenance
- Made of ozone/corona-resistant elastomer
- Special formulation exhibits superior resistance to long-term aging/checking
- Standard package quantity is 12
- 28 eyelets

#### CATALOG NUMBER

- PSC13

*Hubbell has a policy of continuous product improvement.  
Please visit [hubbellpowersystems.com](http://hubbellpowersystems.com) to confirm current  
design specifications*



SF\_09\_059\_E



# CLASS 2 TEMPORARY CONDUCTOR COVER

## 15KV GUARDED PHASE-TO-GUARDED PHASE

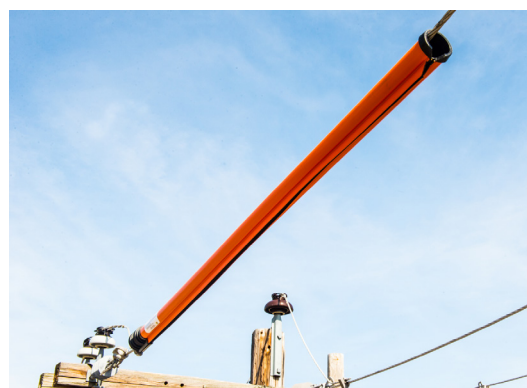


### FEATURES AND APPLICATIONS

- Lightweight - 50% the weight of similar rubber hose
- Rated 8.4kV phase to ground / 15kV guarded phase to guarded phase. (Brush contact only)
- Meets ASTM F712 Class 2
- Available in 5 or 6 ft models
- High visibility orange color
- Secure locking feature / male and female connecting ends
- Larger ID than traditional class 2 rubber hoses (1.75 in. compared to 1.25 in.)



Cover will couple with major brands of rubber line hose and insulator covers.



### CATALOG NO.

### DESCRIPTION

### WEIGHT

PSC4060616  
PSC4060617

5' Class 2 Conductor Cover  
6' Class 2 Conductor Cover

1.7 lb. / 0.77 kg.  
2.0 lb. / 0.90 kg.

*Hubbell has a policy of continuous product improvement. Please visit [hubbellpowersystems.com](http://hubbellpowersystems.com) to confirm current design specifications*

SF\_09\_078\_E



# CUTOUT COVERS

## NEW FLEXIBLE RUBBER SELECTION

### CLASS 2 TYPE II RUBBER COVER

#### FEATURES AND APPLICATIONS:

- For use on Overhead Cutouts
- Conforms to ASTM D1049
- Dimensions of 24" x 15" x 3.75"

#### CATALOG NUMBER

- PSC24CC



Hubbell has a policy of continuous product improvement. Please visit [hubbellpowersystems.com](http://hubbellpowersystems.com) to confirm current design specifications

# OVERHEAD SWITCH BARRIER

## COVER ALL THREE PHASES

The Barrier Board is designed to cover all three phases of a 12kV or 25kV horizontal disconnect switch in a substation. The Barrier Board acts as a physical barrier between the open switch and the bus. It lifts easily with shotgun sticks for proper placement. The barrier covers the lower blade portion of the disconnect switch so that work can be performed on the bottom side of the switch.

### FEATURES

- Designed to fit 12kV or 25kV disconnect switches
- Compatible with 30" and 36" spacing
- Puncture Strength - 300 V/mil (approx .25 in thickness)
- Provided with Gripall adapters (2 positions)
- High visibility orange color
- Provided with yellow vinyl bag
- Available as individual item or 2 per kit



CATALOG NO.	DESCRIPTION	DIMENSIONS	WEIGHT
PSC4060648	Board Barrier	84" x 19" x 5"	17 lb. / 7.7 kg.
PSC4060651	Kit (2 Barriers and Bag)	84" x 19" x 5"	35 lb. / 15.9
PSC4060650	Bag	86" with handles	1 lb. / .45kg

*Hubbell has a policy of continuous product improvement. Please visit [hubbellpowersystems.com](http://hubbellpowersystems.com) to confirm current design specifications*

SF\_09\_050\_E